

CLINIQUE

CL2602 NEW HYBRID TOPPER CHUBBY

VGHL60 Lctr chub NEW topper 960

VGHM60 Lctr chub NEW topper 720

VGHN60 Lctr chub NEW topper 600

VGHP60 Lctr chub NEW topper 480

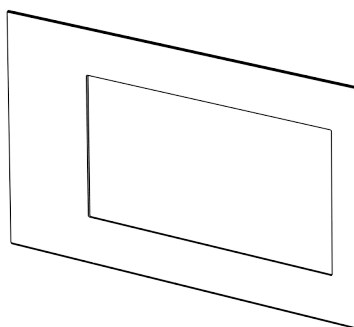
VGHQ60 Lctr chub NEW topper C2

VGHR60 Lctr chub NEW topper C1

VGHS60 Lctr chub NEW topper CS

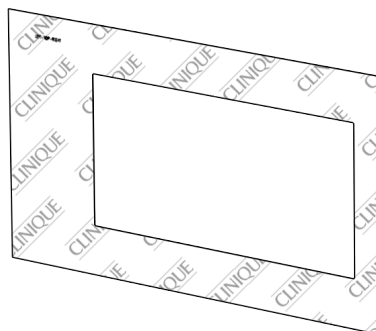
Components for update.

Frame top plate



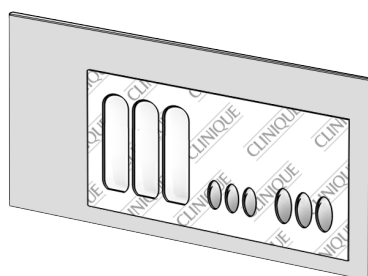
x1

Frame visual



x1

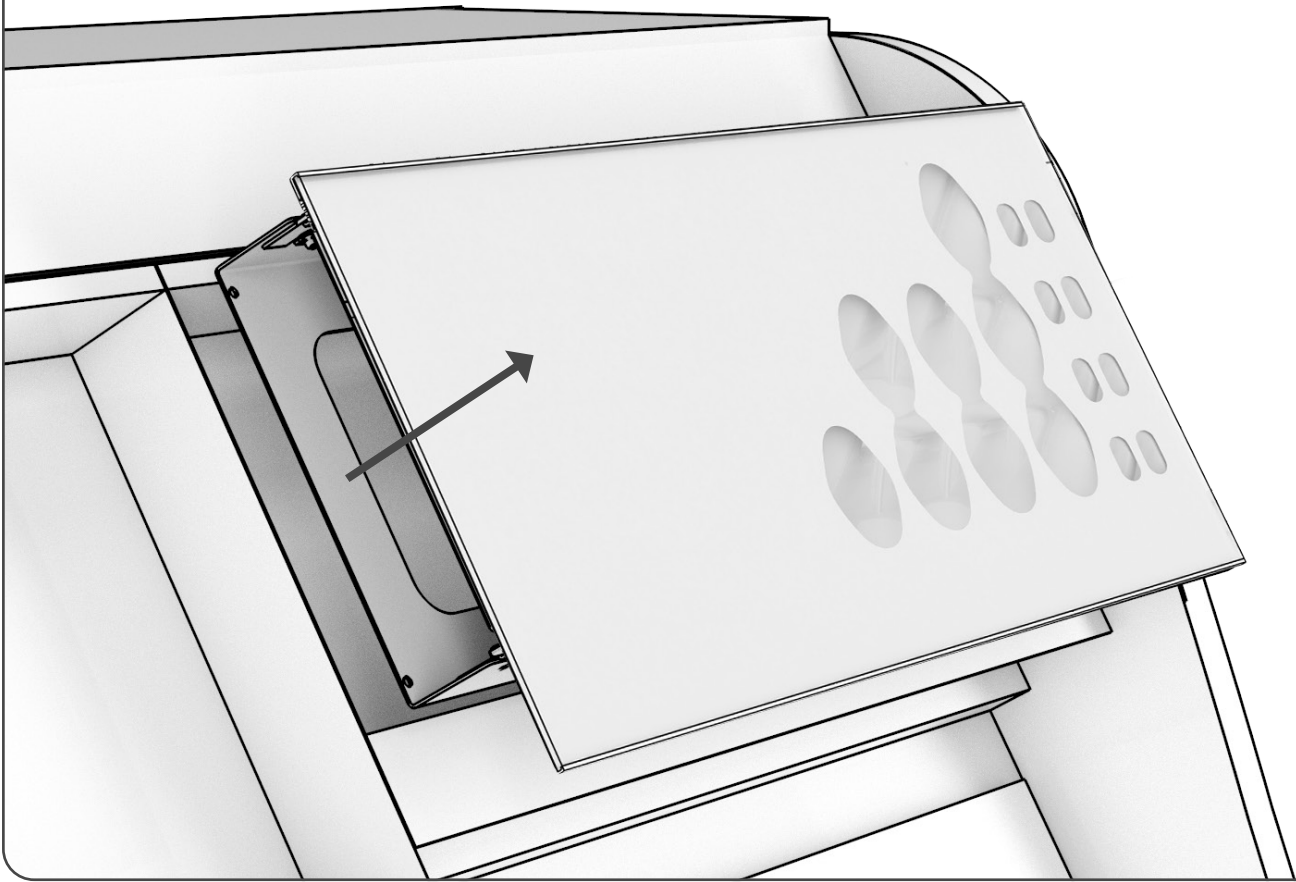
Retrofit Kit



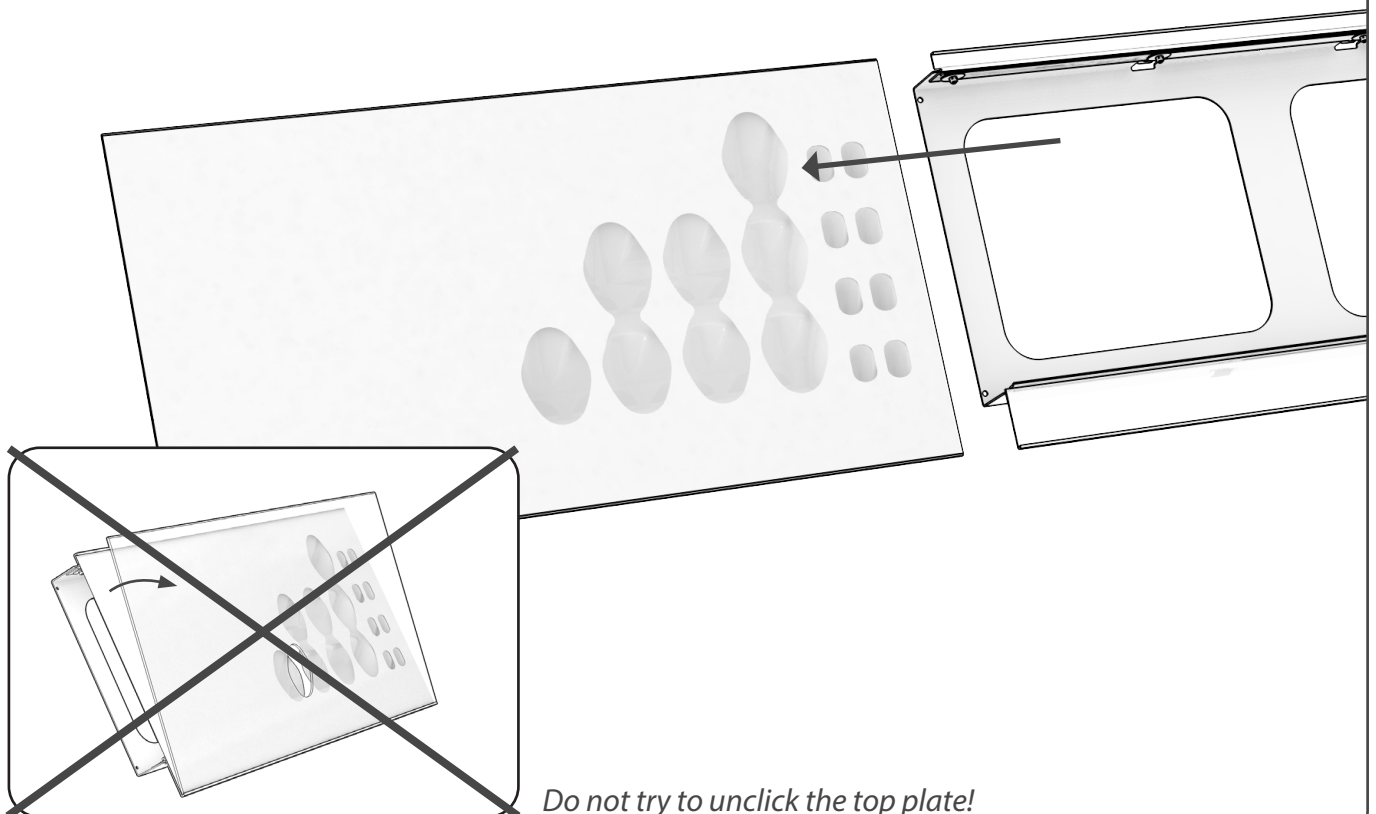
x1

How to install updates (including insert with velcro fixation, clear plate, visual and metal retrofit)

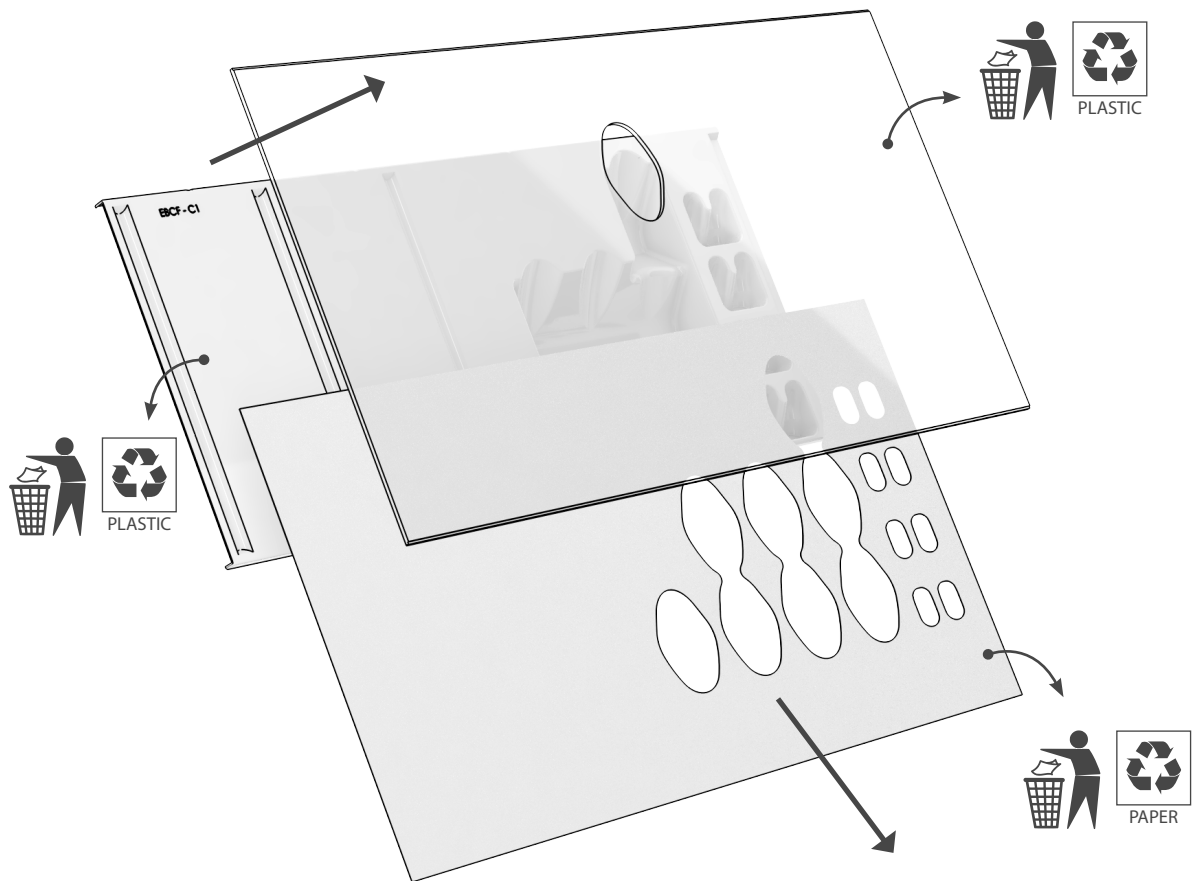
1 Pull the grid out.



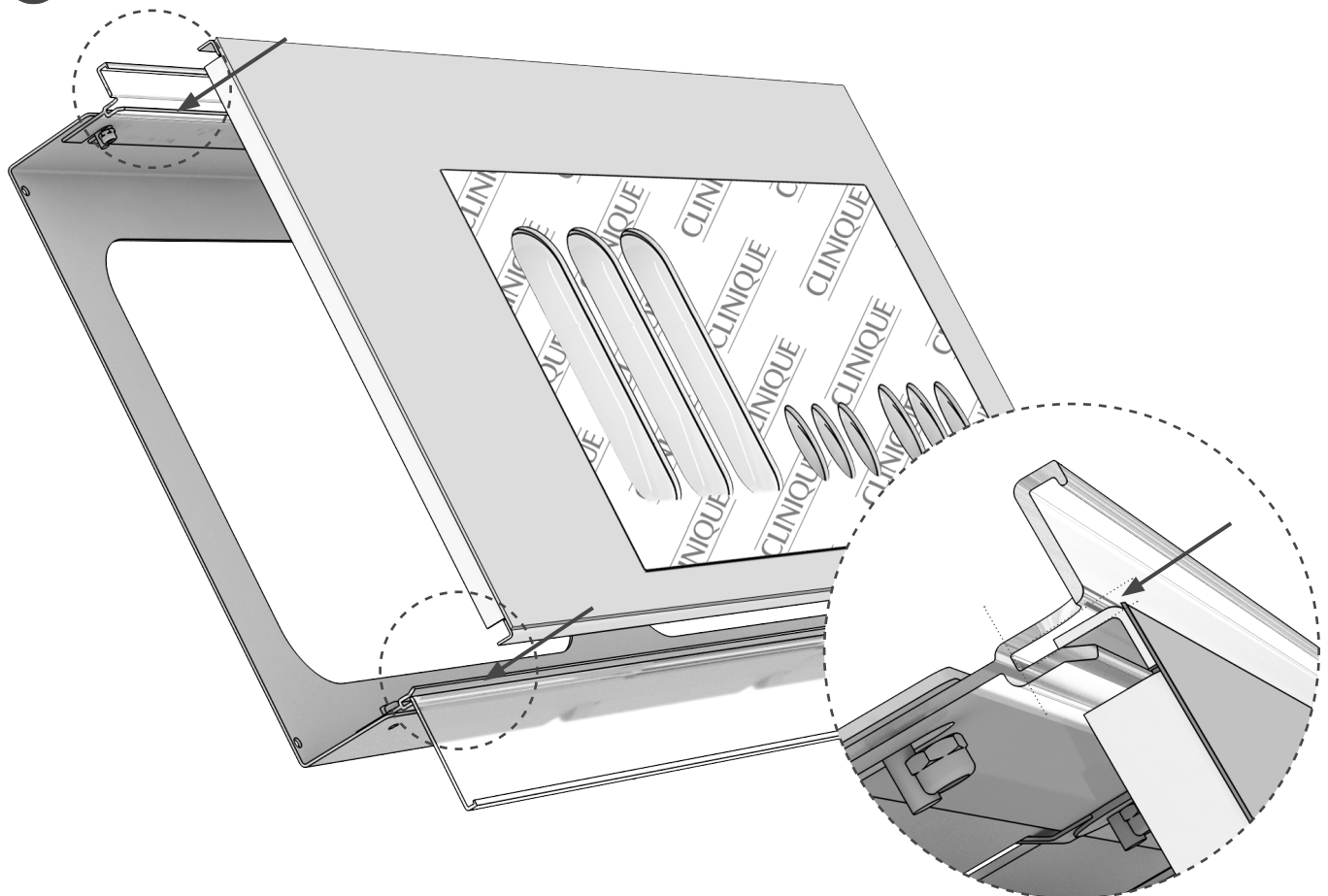
2 Slide the components out of the metal base.



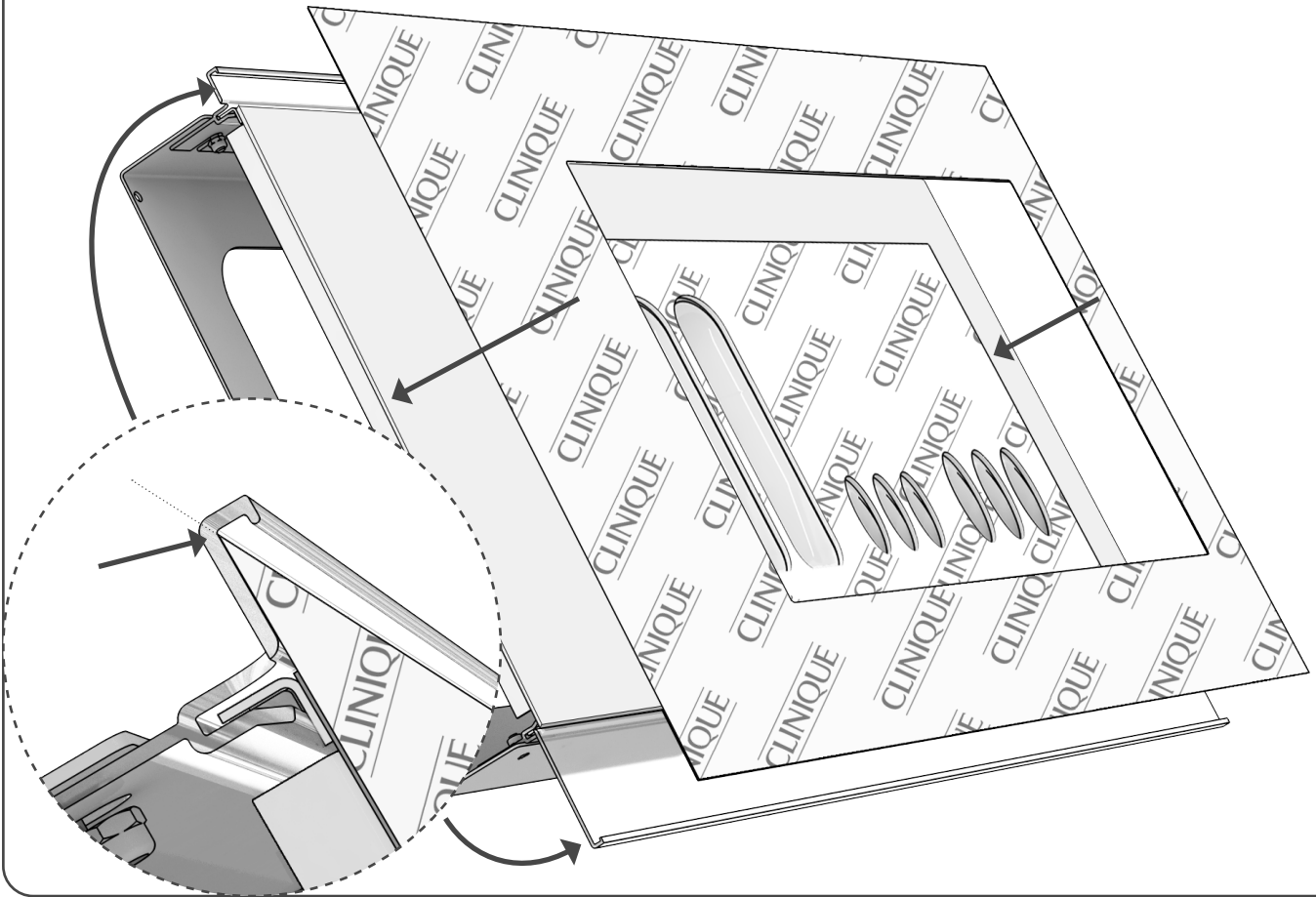
3 Lift the clear template/vacform and visual and sort them in the proper bin



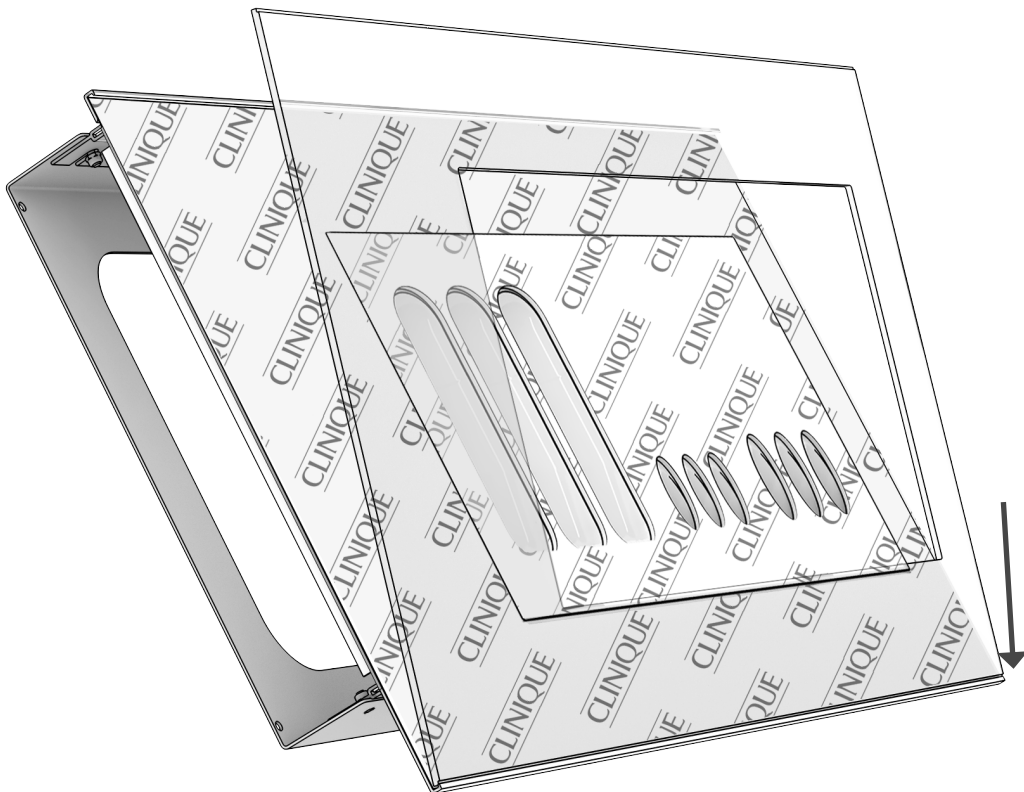
4 Insert **New** metal retrofit into the profile.



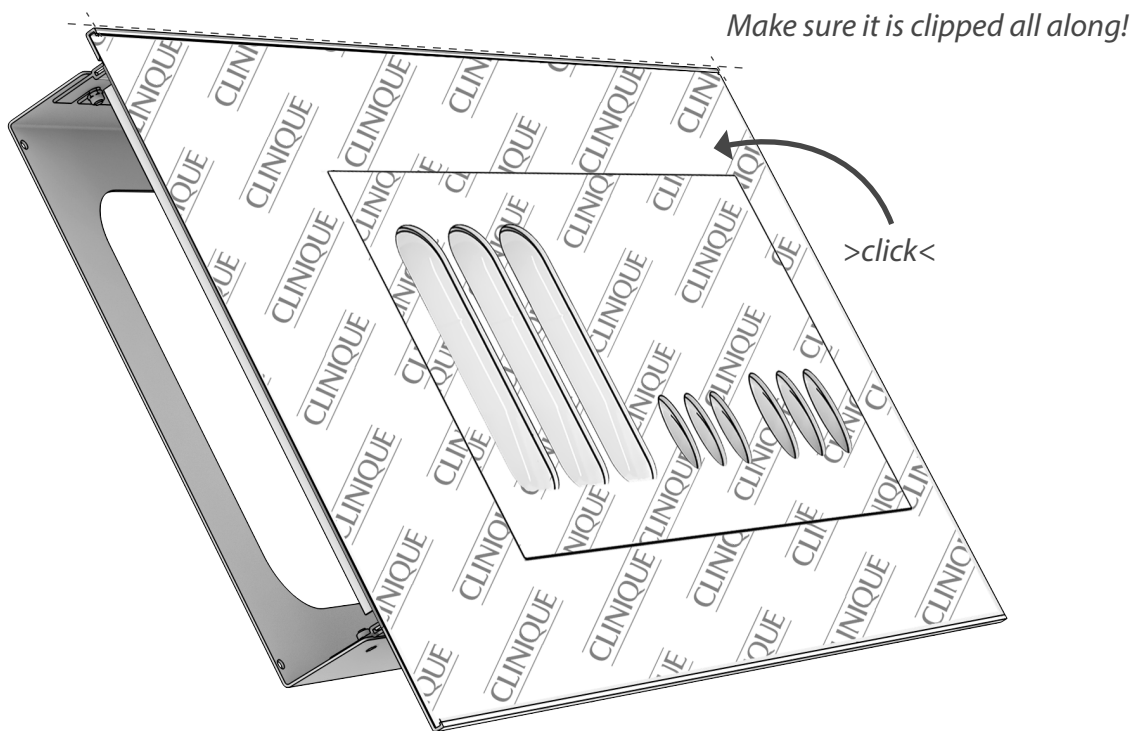
- 5** Place the **New** visual on top of the metal retrofit.



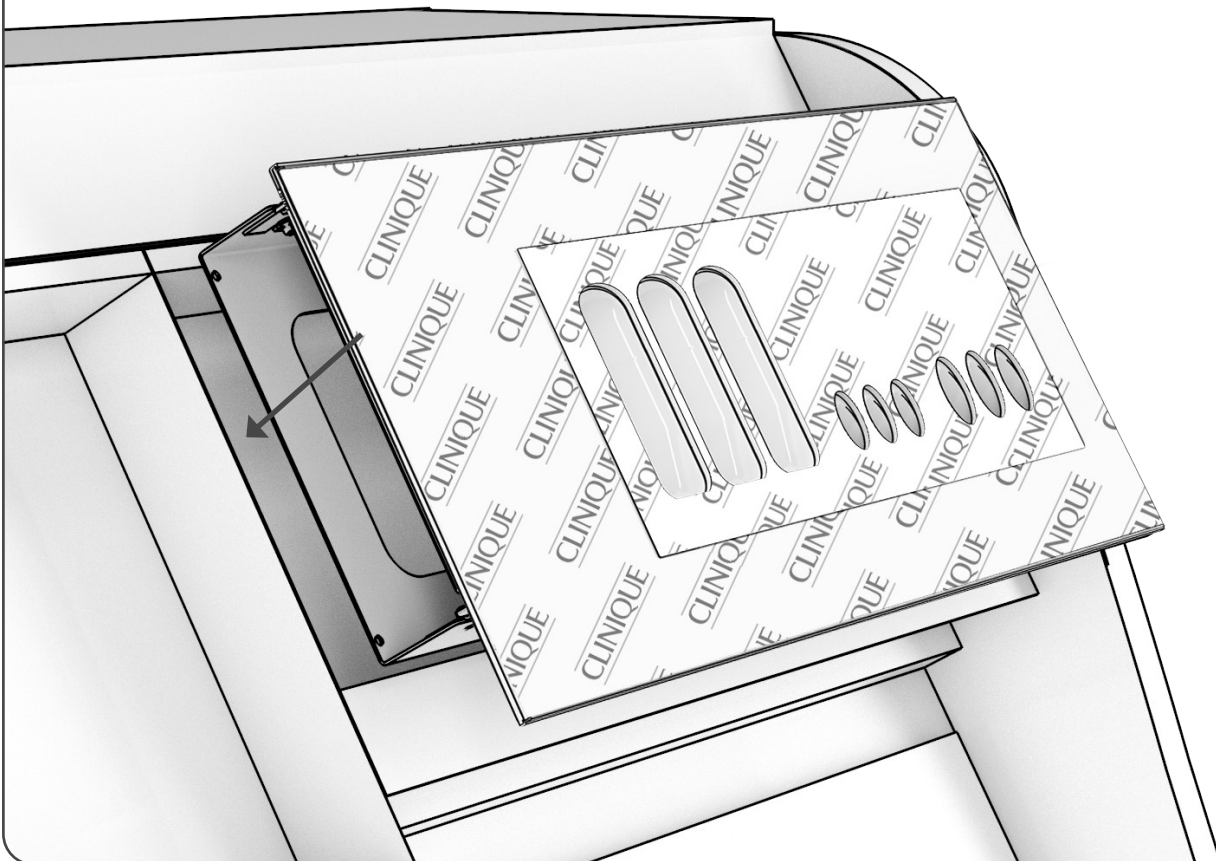
- 6a** Place the **New** transparent cover on the grid and align on the bottom.



6b



7 Place the grid into the gondola.

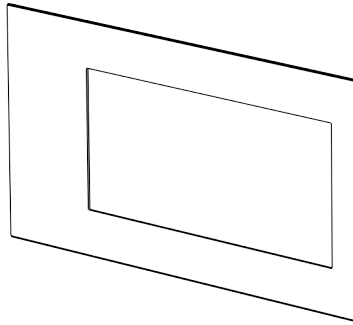


Disposal instruction

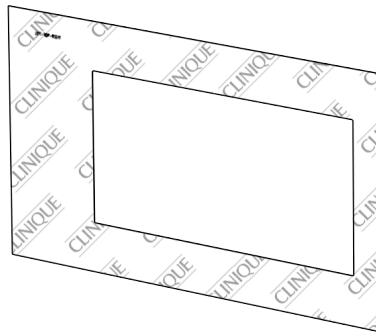
NOMENCLATURE

Generic module
PMMA PS PAPER METAL

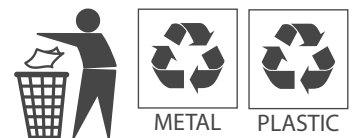
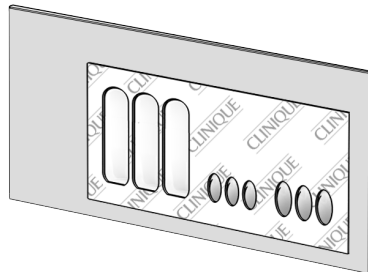
clear PMMA



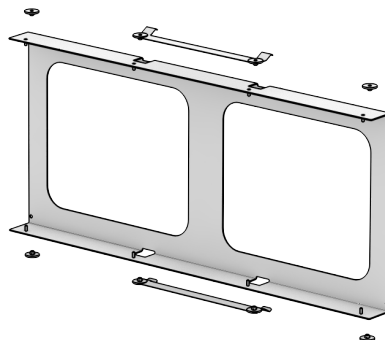
paper
(Frame visual):



retrofit kit
(white metal +
HIPS)



white metal
(metal base)

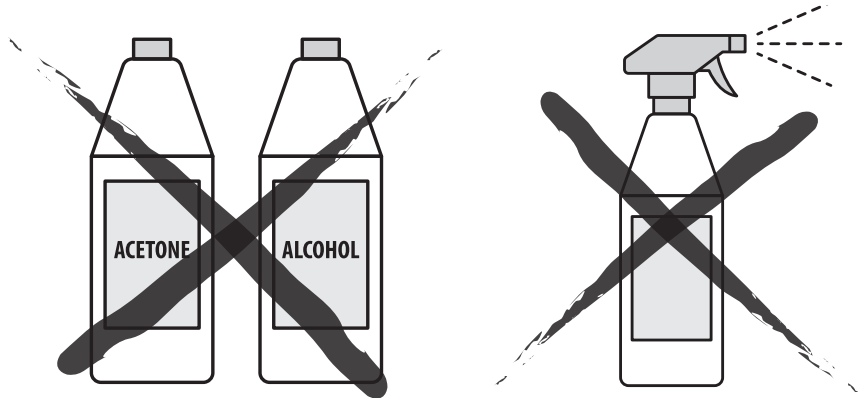


Cleaning your unit

It is essential that the unit is regularly cleaned.

DO NOT USE:

- Cleaning spray!
- Window cleaner!
- Household cleaner!
- Aerosol spray!
- Solvent!
- Alcohol!
- Ammonia!
- Acetone!
- Abrasive!



SAFE TO USE:

- Microfiber cloth
- Soapy solution (dishwashing liquid diluted in water) lightly applied to cloth

