

CLINIQUE

CL2606 CLEAR COVER QUICKLINER HONEY TOPPER

VGM760 Templt topper CS nude H

VGM960 Templt topper C1 nude H

VGMA60 Templt topper 360 nude H

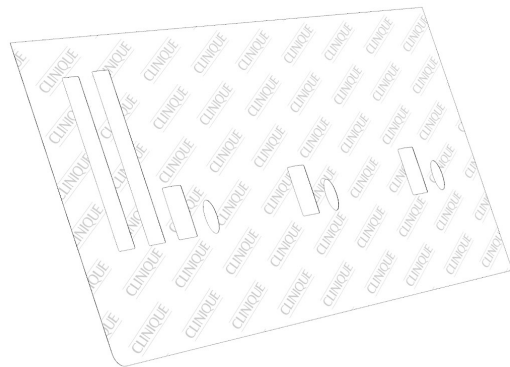
VGMB60 Templt topper 240 nude H

VGMC60 Templt topper 180 nude H

Components for update.



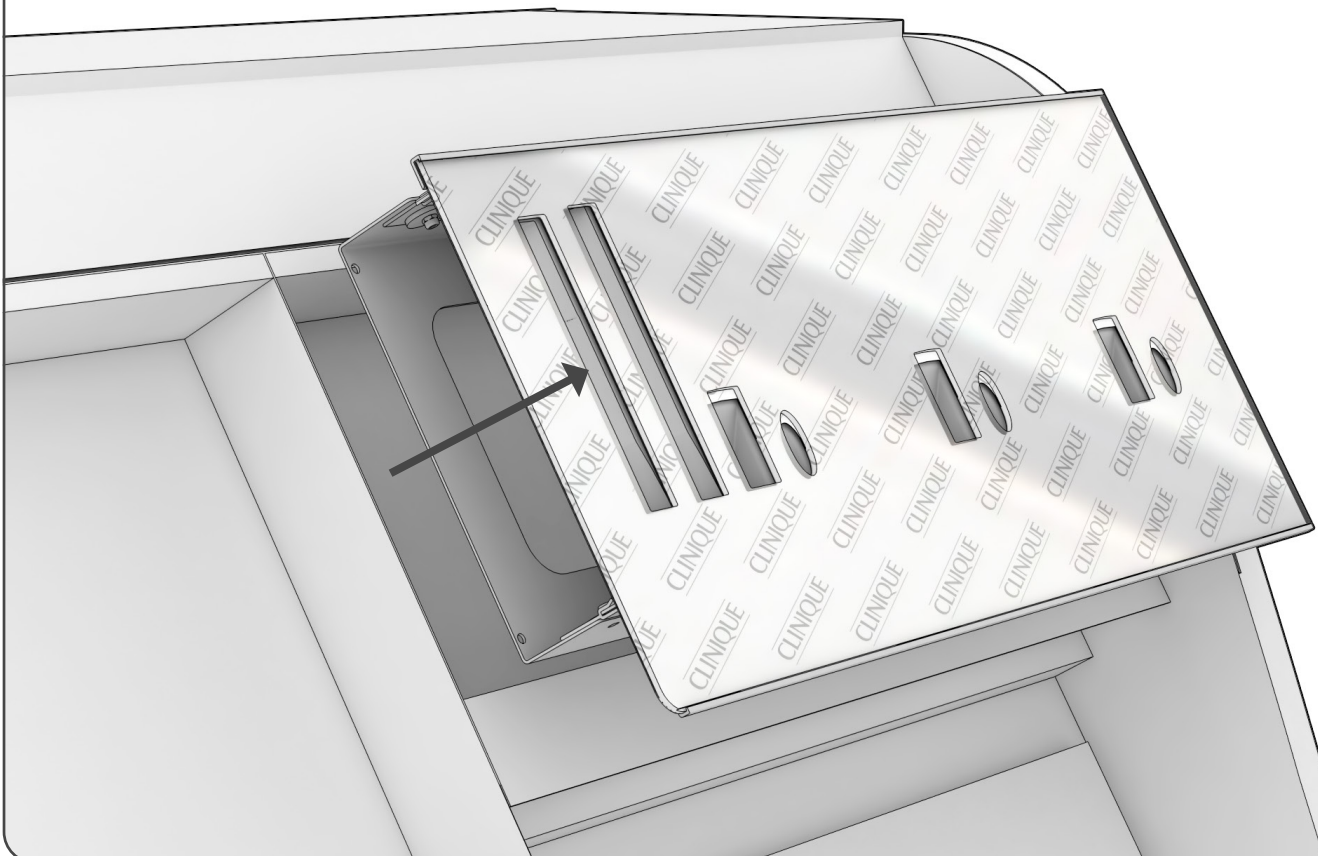
Clear plate



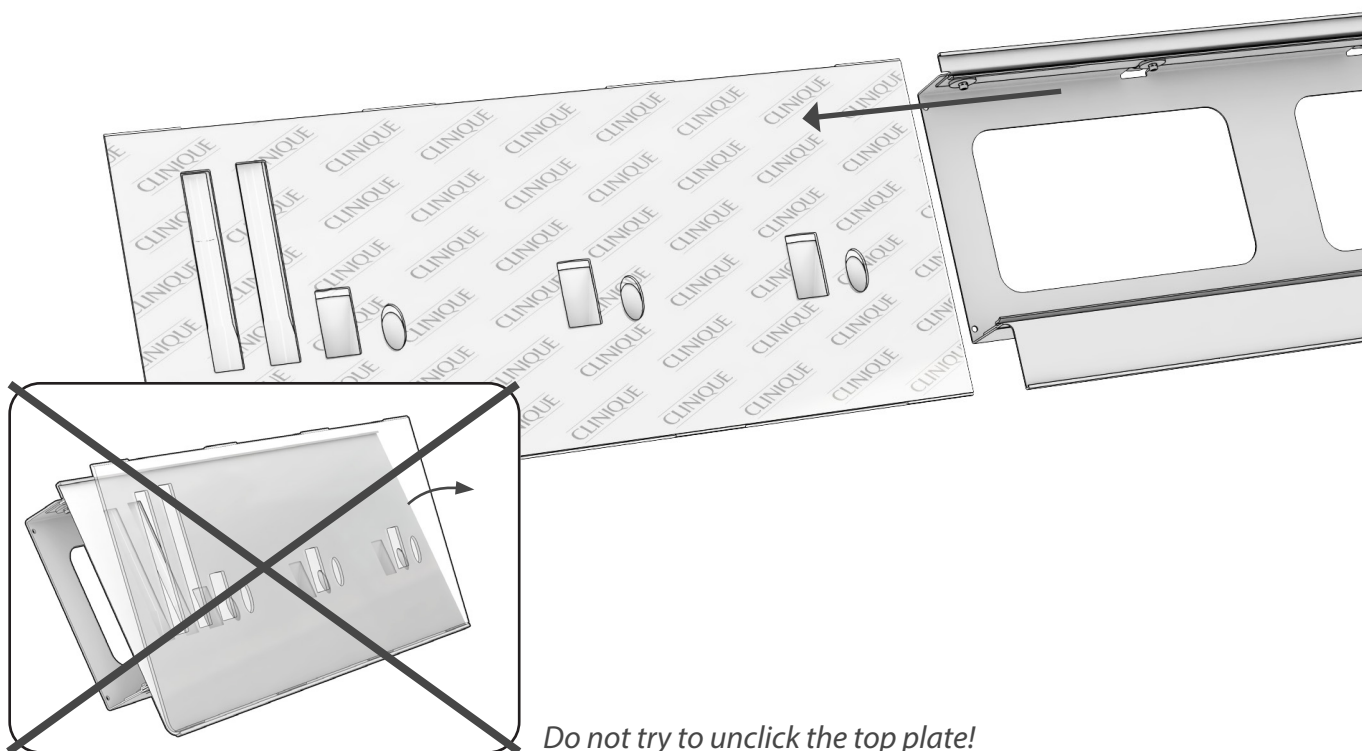
Visual

How to install updates (including clear plate and visual)

1 Pull the grid out.



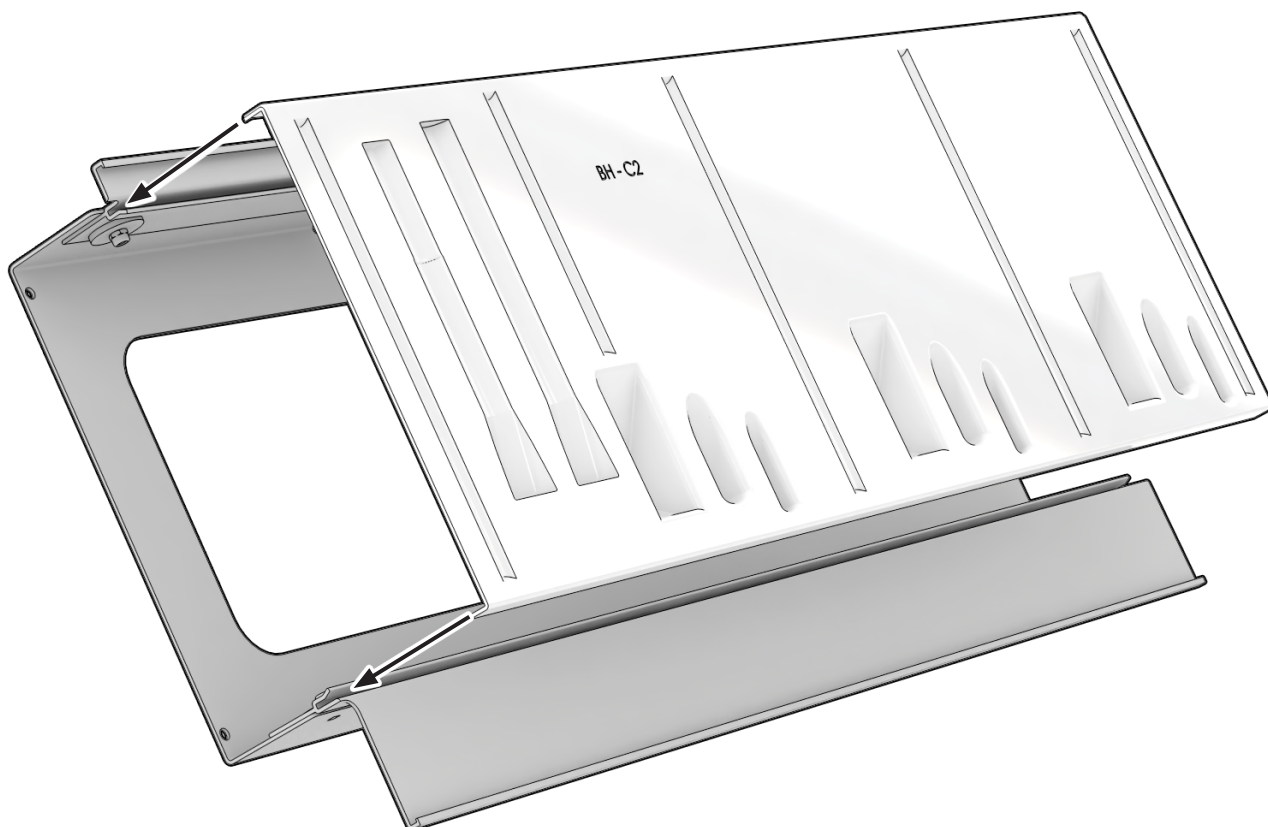
2 Slide the components out of the metal base.



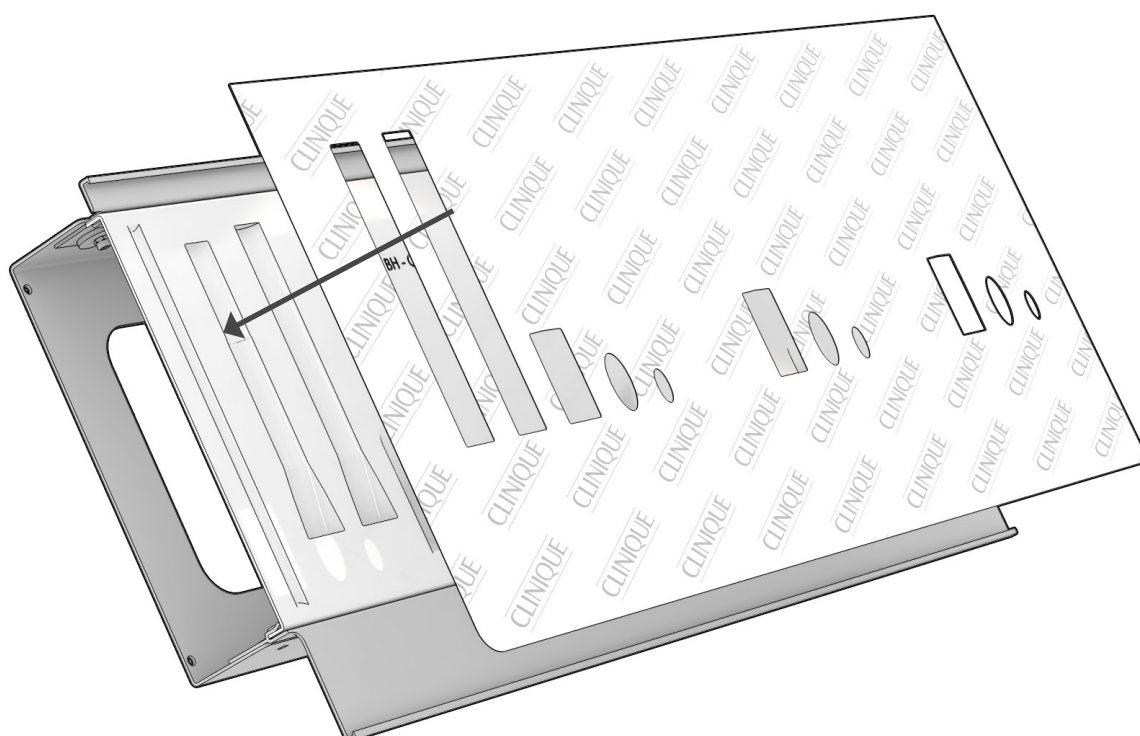
3 Lift the clear template and visual and sort them in the proper bin



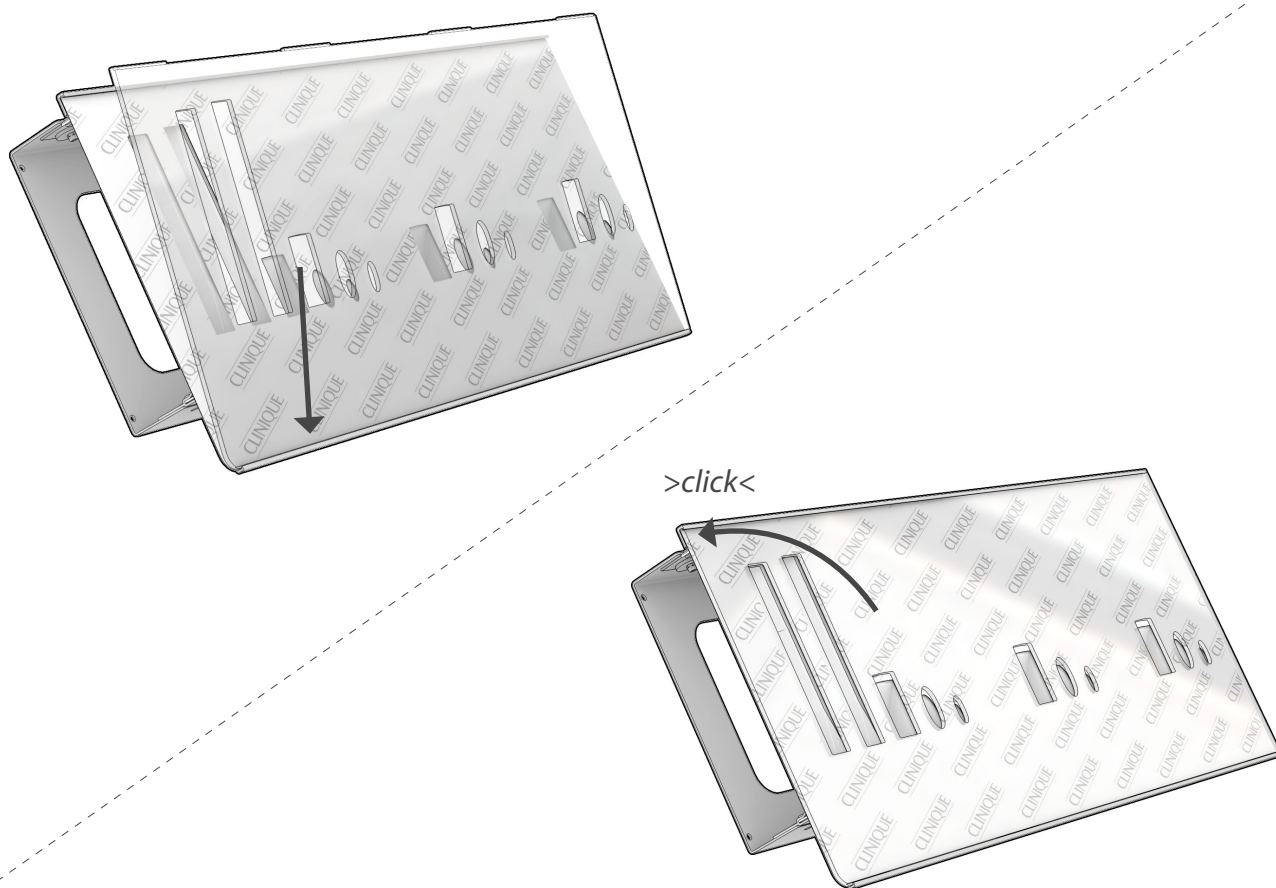
- 4** Put the vacform back into the metal base.



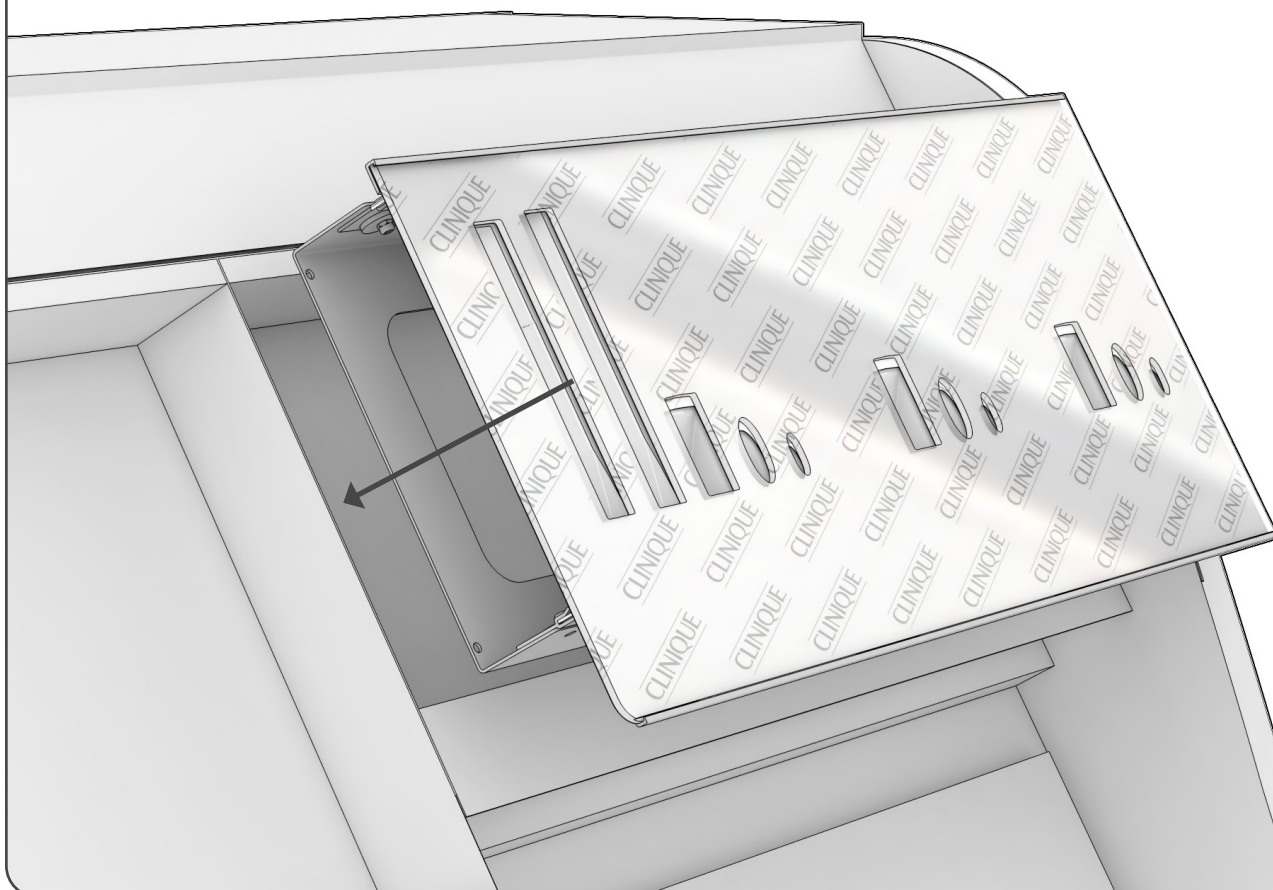
- 5** Place the **New** visual on top of the grid.



- 6** Place the **New** transparent cover on top of the grid.



- 7** Place the complete grid into the structure.



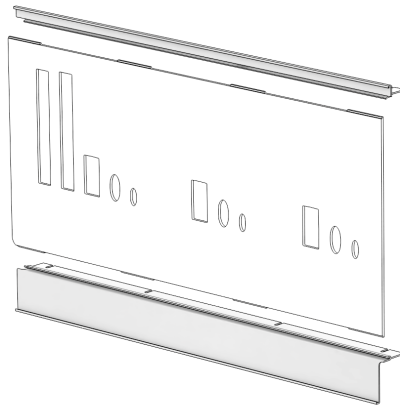
Disposal instruction

NOMENCLATURE

Generic module

PMMA
PS
PAPER
METAL

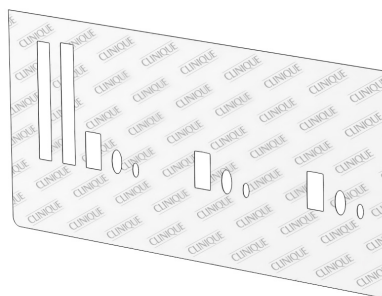
clear PMMA:



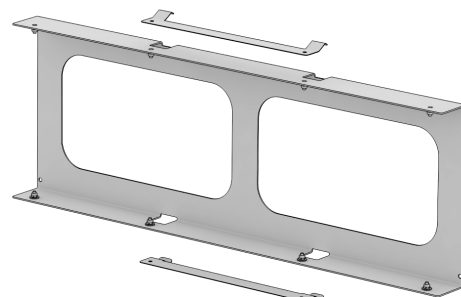
white PS:



PAPER:



white METAL:

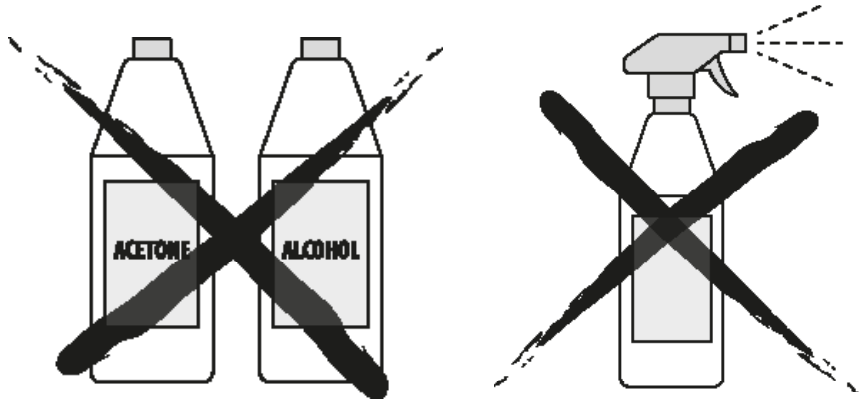


Cleaning your unit

It is essential that the unit is regularly cleaned.

DO NOT USE:

- Cleaning spray!
- Window cleaner!
- Household cleaner!
- Aerosol spray!
- Solvent!
- Alcohol!
- Ammonia!
- Acetone!
- Abrasive!



SAFE TO USE:

- Microfiber cloth
- Soapy solution (dishwashing liquid diluted in water) lightly applied to cloth

