

# Too Faced

	LIP INJECTION					KISSING JELLY		
	POWER PLUMPING LIP GLOSS	EXTREME LIP SHAPER	EXTREME LIP PLUMPER	EXTREME PLUMPING CLICKS	MAXIMUM PLUMP EXTRA STRENGTH LIP PLUMPER	HYDRATING LIP OIL GLOSS	JUICY TINT	PILLOW BALM HYDRATING LIP TREATMENT
PRODUCT								
BENEFIT	Entry To Plump Cooling	Mid-Level Plump Shape & Contour With Heat	Mid-Level Plump With Heat	Mid-Level Plump With Heat	Maximum Plump With Heat	Hydrate & Shine	Hydrate & Color Coverage	Hydrate, Condition, Treat
PERFORMANCE	Instant Plump Moisturizes	Instant Plump 10-Hour Wear	Instant & Long Term Plump Moisturizes	Instant Plump 8-Hour Wear	Instant & Long Term Plump Moisturizes	Ultra-Nourishing	Moisturizes	Moisturizes
FORM	Liquid Gloss With Doe Foot Applicator	Self-Sharpener Liner Pencil	Liquid Gloss With Doe Foot Applicator	Click-Up Gloss Stick	Liquid Gloss With Doe Foot Applicator	Oil Gloss With Doe Foot Applicator	Tint Stick	Liquid Balm With Doe Foot Applicator
FINISH	Shine, Shimmer, Sparkle	Demi-Matte	Shine	Shine	Shine, Shimmer, Sparkle	Shine, Shimmer, Sparkle	Initial Shine Flashes Off To Natural Finish	Healthy-Looking Sheen

# Too Faced

Summer 2025

**Juicy Scented Lip Tint With Serious Staying Power.**

## 7 Juicy Scents

Cream Soda  
Bubblegum  
Strawberry Frosting  
Sour Watermelon  
Cherry Pie  
Raspberry  
Grape Soda

## Vegan

### Free of:

- Gluten
- Mineral Oil
- Parabens
- Silicones



## Instant Hydration & Shine

Balmy gel cream feels smooth and bursts with lasting color and shine.

## Pairs Perfectly with Kissing Jelly Lip Oil Gloss

Wear it alone for a yummy pop of color or mix & match with any Kissing Jelly shade for the ultimate lip treat.

# Too Faced

## KISSING JUICY TINT

### LIP TINT



1. Cream Soda: Rosy Nude

2. Bubblegum: Soft Pink

3. Strawberry Frosting: Hot Pink

4. Sour Watermelon: Coral Red

5. Cherry Pie: Cherry Red

6. Raspberry: Berry

7. Grape Soda: Deep Berry

#### PERFECT PAIRINGS

Kissing Jelly Lip Oil Gloss

Lip Injection Extreme  
Lip Shaper Plumping  
Lip Liner

#### HOW TO APPLY:

Swipe on lips until desired level of coverage and color is achieved. Reapply as needed.

Pro Tip: Top with a coat of Kissing Jelly Lip Oil Gloss to boost your shine!

# KISSING JELLY

## JUICY LIP OIL/GLOSS HYBRID



### WHAT IT IS

Share sweet kisses & treat your lips to your favorite juicy scents with our ultra-nourishing lip oil/gloss hybrid that instantly softens your pout for totally irresistible lips.

### WHAT MAKES IT AMAZING

#### 9 GLOSSY SHADES

- Universal shades look good on everyone
- Infused with a blend of Sunflower & Jojoba Seed Oils
- Wear alone or over lipstick
- Extra-large applicator for smooth, luxurious application

#### HYDRATION AND MOISTURE

- Juicy hydration with a hint of sheer candy color
- Ultra-nourishing blend of natural oils
- Softens lips

#### FINISH AND FEEL

- Instant high-shine glossy finish
- Comfortable, non-sticky wear



9 SHADES

Vegan-Friendly

# KISSING JELLY

JUICY LIP OIL/GLOSS HYBRID



## 1. Piña Colada

Smells like Piña Colada!

Clear with Gold Shimmer

## 2. Raspberry

Smells like raspberries!

Electric Fuchsia

## 3. Strawberry Frosting

Smells like Strawberry Frosting!

Clear with Pink & Gold Shimmer

## 4. Cherry Pie

Smells like Cherry Pie!

Glossy Red

## 5. Birthday Kiss

Smells like Vanilla Birthday Cake!

Shimmering Magenta with Blue/Pink Sparkle

## 6. Sweet Cotton Candy

Smells like cotton candy!

Cool Mint Blue

## 7. Bubblegum

Smells like bubblegum!

Pink with Gold Shimmer

## 8. Sour Watermelon

Smells like watermelon!

Warm Electric Pink

## 9. Grape Soda

Smells like grape soda!

Purple with Multi-Color Shimmer

## PRO TIPS

**HOW TO APPLY:** Apply directly onto clean dry lips using the doe-foot applicator. Lay the doe-foot applicator flat against the lips to evenly distribute with a back-and-forth motion.

### TF BFFs



**Better Than Sex  
Mascara**



**Born This Way Super  
Coverage Concealer**



**Cloud Crush Blush**



# PILLOW BALM

ULTRA-HYDRATING & NOURISHING LIP TREATMENT



## WHAT IT IS

Hydrating and nourishing lip treatment that leaves lips feeling soft, smooth, plumped with moisture, and kissed with a hint of color.

## WHAT MAKES IT AMAZING

### ♥ PROVIDES INTENSE HYDRATION

- Creates a moisturizing barrier to prevent dryness
- Infused with a nourishing complex of fruit oils, conditioning butters, and hyaluronic acid to deeply hydrate and improve the appearance of fine lines
- Suitable for both day and night use

### ♥ FINISH AND FEEL

- Rich, cushiony formula glides comfortably over lips with a creamy texture
- Leaves lips moisturized and pillowy-soft with a healthy-looking sheen and a hint of color



 7 SHADES

Formulated without: Parabens and Silicone

# PILLOW BALM

ULTRA-HYDRATING & NOURISHING LIP TREATMENT



## 1. Original

**Scent:** Smells like coconut water!

**Description:** Semi-glossy finish

## 2. Juicy Watermelon Kiss

**Scent:** Smells like watermelon!

**Description:** Vibrant juicy pink

## 3. Pink Pineapple Kiss

**Scent:** Smells like tropical fruit!

**Description:** Soft peachy pink

## 4. Ice Crystal

**Scent:** Smells like a blue raspberry spritz!

**Description:** Light ice blue with iridescent shimmer

## 5. Banana Kiss

**Scent:** Smells like bananas!

**Description:** Semi-glossy finish

## 6. Berry Jam Kiss

**Scent:** Smells like berries!

**Description:** Rich berry purple

## 7. Hot Cocoa Kiss

**Scent:** Smells like chocolate!

**Description:** Cool nude brown

**HOW TO APPLY:** Apply to lips with the comfortable doe-foot applicator any time your lips crave moisture.

**PRO TIP:** Use overnight as a hydrating lip mask.

---

TF BFFs

---



Lip Injection Extreme  
Lip Shaper



Born This Way Super  
Coverage Concealer

# LIP INJECTION EXTREME LIP SHAPER

PLUMPING LIP LINER



## WHAT IT IS

This longwear lip liner reshapes the appearance of your lip line to create a supersized lip look through color that won't smudge, feather, or bleed. Lips look plumped to perfection!

## WHAT MAKES IT AMAZING

### ♥ KISSABLE LONG-WEAR COLOR

- Instant & long-lasting plumping for 8 hours
- Experience 10 hours of lightweight, demi-matte wear
  - Non-Feathering (10 hours)
  - Non-Bleeding (10 hours)
  - Non-smudging (10 hours)
  - Waterproof (10 hours)

### ♥ LIPS LOOK PLUMPED TO PERFECTION!

- High pigment-load color that won't smudge, feather, or bleed
- Larger diameter helps shape lips and overline for a fuller look
- Round click-pen mechanism – no sharpening required!
- Smells like strawberries



Formulated without Gluten and Mineral Oil. Vegan-Friendly.

**8 SHADES**



# LIP INJECTION EXTREME LIP SHAPER

PLUMPING LIP LINER



**Post-Op Pink**

LIGHT PINK NUDE



**Puffy Nude**

PERFECT ROSE NUDE



**Hot & Spicy**

CARAMEL NUDE



**Voted Most Popular**

HOT PINK



**Happily Ever After**

TRUE RED



**I Do**

DUSTY ROSE



**In Big Truffle**

CHOCOLATE NUDE



**Espresso Shot**

DARK CHOCOLATE NUDE

## PRO TIPS

**HOW TO APPLY:** To enhance the shape of your lips, begin by following the natural lip line. Slightly over-line the Cupid's bow and bottom center lip for a full pout effect.

**PRO TIPS:** Feathering your lipliner makes it softer and easier to blend. Make sure to feather onto the lip line, then in the lip area to contour. This gives the illusion of fuller lips and helps your lipstick last longer.

### BLURRED & FULL LIPS

Line lips with **Lip Injection Extreme Lip Shaper** in your shade of choice. Diffuse lip liner with a small, dense eye shadow brush. Follow with your favorite shade of **Lip Injection Power Plumping Lip Gloss**.

### PLUMPING BASE

To create the perfect plumping base for any lipstick or lip gloss, apply **Lip Injection Extreme Lip Shaper** all over lips. Then, top lips with choice of lip product.

### JUICY PLUMPED LIPS

Slightly line outside the natural lip line with a deep shade, then fill in lips with a lighter shade and finish with a generous coat of **Lip Injection Power Plumping Lip Gloss** on center of lips.

---

TF BFFs

---



Lip Injection Lip Gloss



Lady Bold Lipstick



Lip Injection  
Maximum Plump

# LIP INJECTION MAXIMUM PLUMP

EXTRA STRENGTH INSTANT & LONG-TERM LIP PLUMPER



## WHAT IT IS

The ultimate lip plumping formula that creates max results where lips appear plumped, hydrated, and nourished immediately, and over time!

## WHAT MAKES IT AMAZING

### ♥ MAXIMUM STRENGTH PLUMPING + HYDRATION FOR THE PLUMPEST POUT EVER

- Contains extra strength plumping technology that you will see and feel
- Hydrates and nourishes immediately
- Delivers intense visible plumping to the lips immediately, and overtime
- Lips feel softer and smoother
- Lightweight serum-like gloss

### ♥ ORIGINAL FORMULA + FOUR NOSTALGIC SCENTS WITH A KISS OF COLOR

- Delicious scent that will remind you of your favorite childhood treat
- Cotton Candy Kisses - Smells like cotton candy with a delicate shade of light pink and gold pearl
- Blueberry Buzz – Smells like blueberries with a delicate shade of lavender-purple and shifting blue pearl
- Creamsicle Tickle – Smells like orange Creamsicle with a delicate shade of coral orange-pink and gold pearl
- Yummy Bear – Smells like Gummy Bears with a delicate shade of red-pink and hot pink pearl

### ♥ COLORFUL DETAILS MATCH EACH SHADE

- Maximum Plump logo and metallic cap color coordinated to match each shade

## TOO FACED WINK

Based on the popularity of our iconic Lip Injection Extreme, we created a new lip plumper using our scientifically-proven advanced volumizing technology to create a product for true plumping junkies.



# LIP INJECTION MAXIMUM PLUMP

EXTRA STRENGTH INSTANT & LONG-TERM LIP PLUMPER



- ♥ 96% LEAVES LIPS FEELING PLUMPED (1 WEEK)\*
- ♥ 96% LEAVES LIPS FEELING HYDRATED (IMMEDIATELY)\*
- ♥ 98% LEAVES LIPS LOOKING RE-VOLUMIZED (1 WEEK)\*
- ♥ 97% LEAVES LIPS FEELING SOFTER AND SMOOTHER OVER TIME (1 WEEK)\*

\*In a study of 106 women

## PRO TIPS

**HOW TO APPLY:** For an instant sexy pout, apply Lip Injection Maximum Plump onto clean dry lips using the doe-foot-applicator.

**PRO TIP:** Defined & Plumped Lips

Step 1: Line and define the lips using Lady Bold Lip Liner.

Step 2: Fill in the lips with choice of shade of Lip Injection Maximum Plump.

**Selling Phrase:** "Lip Injection Maximum Plump is the perfect lip gloss to give your lips a sexy pout with a gorgeous hint of color!"

## TF BFFs



### Melted Matte Liquid Lipstick

Long-wearing, innovative ultra-matte lipstick with the staying power of a stain and the intense color of a liquid lipstick.



### Better Than Sex Mascara

Too Faced Better Than Sex Mascara is the #1 mascara in America\*

\*Source: The NPD Group, Inc./ U.S. Prestige Beauty  
Total Measured Market, Makeup Product Sales  
November 2020 – October 2021 Updated: February 2022

FOR INTERNAL USE ONLY

# LIP INJECTION

## POWER PLUMPING LIP GLOSS



### WHAT IT IS

Lip Injection Lip Gloss provides seriously juicy, plush, multidimensional color that's infused with our iconic Lip Injection plumping power to provide beautiful plumped lips!

### WHAT MAKES IT AMAZING

#### ♥ POWERFUL HYDRATION PROVIDES INSTANT RESULTS

- Lips appear fuller
- Pout is plumper
- Lip texture is instantly smoother

#### ♥ GORGEOUS MULTIDIMENSIONAL COLOR THAT GLIDES ON SMOOTH FOR JUICY, PLUMPED LIPS

- Available in 16 beautiful shades
- High-shine gloss payoff
- Plush and smooth texture makes lips irresistible

### TOO FACED WINK

Too Faced started the sexy plump lips revolution more than 15 years ago when we launched groundbreaking original Lip Injection plumping gloss. Now drench your lips in multidimensional juicy color with Lip Injection Lip Gloss available in 16 juicy shades that have a high shine cream or high shine shimmer finish, and iconic plumping power.



● ● ● ● ● ● ● ● ● ● ● ● ● ● ● ● 16 SHADES

# LIP INJECTION

## POWER PLUMPING LIP GLOSS



### HIGH-SHINE

*creamy*

### FINISH



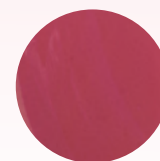
**Just A Girl**  
Flushed Coral  
Pink



**Glossy & Bossy**  
Soft Mauve  
Pink



**Wifey For Life**  
Warm Rose  
Nude



**Wanna Play?**  
Warm Rustic  
Mauve



**Soulmate**  
Cool  
Beige



**Secure the Bag**  
Light Toasted  
Terracotta



**On Blast**  
Bright  
Coral



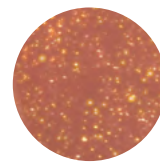
**People Pleaser**  
Vivid Warm  
Fuschia



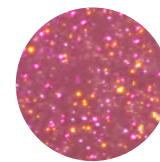
**Stars Are Aligned**  
Clear



**Pretty Pony**  
Baby Pink



**Just Friends**  
Medium Cool Pink



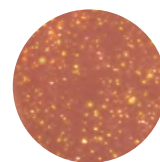
**Paid Off**  
Mauve



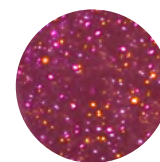
**Secret Sauce**  
Light Peach



**The Bigger  
the Hoops**  
Warm Nude



**Say My Name**  
Medium Brown



**Hot Love**  
Deep Mauve

### HIGH-SHINE

*shimmer*

### FINISH

## PRO TIPS

**HOW TO APPLY:** Apply directly onto clean dry lips using the doe-foot applicator. Lay the doe-foot applicator flat against the lips to evenly distribute the richest pigment applying in a back and forth motion. For a more precise application use the tip of the doe-foot applicator to apply gloss to the lip line.

**TF PRO TIP:** For a max plump and glossy lip, first apply Lip Injection Maximum Plump and layer your choice of a juicy color of Lip Injection Lip Gloss on top!

### TF BFFs



#### Born This Way Turn Up The Light

This baked highlighting trio will add dimension, lift, and luminosity to bring out the inner radiance for a perfectly-lit complexion anywhere you go.



#### Lip Injection Maximum Plump

The ultimate lip plumping formula that creates max results where lips appear plumped, hydrated, and nourished immediately, and over time!

Updated: July 2020

FOR INTERNAL USE ONLY



# LIP INJECTION EXTREME

INSTANT & LONG-TERM LIP PLUMPER



## WHAT IT IS

A lip plumper for immediate satisfaction and long-term results; this is a day-and-night-use gloss for lips that appear full and pouty from your very first application and plumper over time.

## WHAT MAKES IT AMAZING

### ♥ INSTANTLY FULLER LIPS

- Lips appear fuller from the very first application with our advanced lip-volumizing technologies
- A slight tingle can be felt within the first minute of application and is a sign that your pout is plumping
- Natural lip color may flush a tint rosier for a natural blush

### ♥ LAB-TESTED BLEND OF INGREDIENTS FOR LONG-TERM RESULTS

- Atelocollagen, Marine Filling Spheres, nourishing Avocado and Jojoba oils, and antioxidant Vitamin E create the unique ability to offer long-term, lasting plumping effects.

### ♥ NON-STICKY LIGHTWEIGHT GLOSS

- Clear comfortable sheen and pearlescent light-reflecting shine looks great all alone or over lipstick



**1 SHADE**

# LIP INJECTION EXTREME

INSTANT & LONG-TERM LIP PLUMPER



Clear with  
pearlescent finish

## PRO TIPS

**HOW TO APPLY:** Apply directly on clean dry lips morning and night and throughout the day as your plumping lip treatment.

**Note:** You may experience a slightly intense tingle that can last up to 5-10 minutes. Apply only within perimeter of lips. If applied on skin, a temporary redness may occur. If any discomfort is present, remove and discontinue use. Keep away from children.

**TF PRO TIP:** Exfoliate lips with Peach Lip Scrub to remove dry skin and create a smooth surface. Apply a generous coat of Lip Injection Extreme with doe-foot applicator and pat onto the lip with fingers. Layer your favorite lip color on top.

\*If you go out of the lip line with Lip Injection Extreme, use a nude flesh toned lip color to create a fuller plump pout.

---

### TF BFF'S

---



#### Better Than Sex Mascara

A mascara so amazing . . . it's Better Than Sex! Experience the #1-selling prestige mascara in America.



#### Melted Matte

Long-wearing, innovative ultra-matte lipstick with the staying power of a stain and the intense color of a liquid lipstick.

# LIP INJECTION EXTREME PLUMPING CLICKS

JUICY LIP OIL/GLOSS HYBRID



## WHAT IT IS

Plump your lips & treat them to a kiss of dewy, high-shine color + hydration! Just one click gives you the plump, juicy lips you've been looking for.

## WHAT MAKES IT AMAZING

### ♥ AVAILABLE IN 8 JUICY SHADES

- 8-hour hydration and one-swipe color payoff
- Smells like fresh strawberries!

### ♥ FINISH AND FEEL

- Creamy formula melts on, plumps lips instantly with just one click
- Sheer-to-medium buildable coverage with gorgeous shine and a kiss of color



Vegan-Friendly

# LIP INJECTION EXTREME PLUMPING CLICKS

JUICY LIP OIL/GLOSS HYBRID



1. Sweet Lavender  
Sheer Lavender  
w/Tonal Purple
2. Perfect Pink  
True Strawberry Pink
3. On Point  
Cherry Red
4. Don't Be Chai  
Nude With Soft Tonal  
Shimmer

5. Velvet Crush  
Mid-Tone Nude Brown
6. Kiss The Bride  
Cool Mauve Nude
7. Feelin' Spicy  
Deep Warm Red-Brown
8. Voted Most Popular  
Fuchsia Pink

## HOW TO APPLY:

- Click once for the perfect amount of gloss.
- Swipe on lips for a pop of hydrating color.
- Click for additional product as needed.
- Layer one or multiple shades for custom coverage.
- Do not over click!

**PRO TIP:** For the ultimate glossy, plump lips, pair with Lip Injection Extreme Lip Shaper.

1. Define your lips with the Lip Injection Extreme Lip Shaper.
2. Feather the lipliner inward toward the center of your lips to create a soft, blurred effect.
3. Finish with a Lip Injection Extreme Plumping Clicks Gloss to enhance fullness and shine.

---

## TF BFFs

---



Lip Injection Extreme  
Lip Shaper Plumping Lip Liner



Pillow Balm Ultra-Hydrating  
and Nourishing Lip Treatment



Cloud Crush  
Blurring Blush

CCM Wifi  
User: spectrumsetup49  
Pass: recentstate719

			PUBLIC PRICING			TF EMPLOYEE 60% DISCOUNT		
PRODUCT CODE	PRODUCT	QTY	PUBLIC PRICE	TAX	PRICE + TAX	EMPLOYEE PRICE	TAX	EMPLOYEE DISCOUNT + TAX
3EL9010000	Kissing Jelly Sour Watermelon	704	\$22.00	\$2.15	\$24.15	\$8.80	\$0.86	\$9.66
3EL7010000	Kissing Jelly Raspberry	704	\$22.00	\$2.15	\$24.15	\$8.80	\$0.86	\$9.66
3EL6010000	Kissing Jelly Bubblegum	704	\$22.00	\$2.15	\$24.15	\$8.80	\$0.86	\$9.66
3EL5010000	Kissing Jelly Grape Soda	352	\$22.00	\$2.15	\$24.15	\$8.80	\$0.86	\$9.66
3EL4010000	Kissing Jelly Sweet Cotton Candy	352	\$22.00	\$2.15	\$24.15	\$8.80	\$0.86	\$9.66
3EJE010000	Kissing Jelly Pina Colada	352	\$22.00	\$2.15	\$24.15	\$8.80	\$0.86	\$9.66
30SA010000	Kissing Jelly Birthday Kiss	352	\$22.00	\$2.15	\$24.15	\$8.80	\$0.86	\$9.66
30SQ010000	Kissing Jelly Shade Strawberry Frosting	352	\$22.00	\$2.15	\$24.15	\$8.80	\$0.86	\$9.66
30SR010000	Kissing Jelly Shade Cherry Pie	704	\$22.00	\$2.15	\$24.15	\$8.80	\$0.86	\$9.66
30ZC030000	Kissing Juicy Tint - Bubblegum	360	\$26.00	\$2.54	\$28.54	\$10.40	\$1.01	\$11.41
30ZC020000	Kissing Juicy Tint - Cream Soda	360	\$26.00	\$2.54	\$28.54	\$10.40	\$1.01	\$11.41
30ZC060000	Kissing Juicy Tint - Cherry Pie	360	\$26.00	\$2.54	\$28.54	\$10.40	\$1.01	\$11.41
30ZC010000	Kissing Juicy Tint - Strawberry Frosting	180	\$26.00	\$2.54	\$28.54	\$10.40	\$1.01	\$11.41
30ZC040000	Kissing Juicy Tint - Sour Watermelon	360	\$26.00	\$2.54	\$28.54	\$10.40	\$1.01	\$11.41
30ZC070000	Kissing Juicy Tint - Raspberry	360	\$26.00	\$2.54	\$28.54	\$10.40	\$1.01	\$11.41
30ZC080000	Kissing Juicy Tint - Grape Soda	180	\$26.00	\$2.54	\$28.54	\$10.40	\$1.01	\$11.41
300D010000	Lip Injection Pumping Clicks -Don't Be Chai	130	\$28.00	\$2.73	\$30.73	\$11.20	\$1.09	\$12.29
300D020000	Lip Injection Pumping Clicks - Velvet Crush	130	\$28.00	\$2.73	\$30.73	\$11.20	\$1.09	\$12.29
300D040000	Lip Injection Pumping Clicks - Perfect Pink	130	\$28.00	\$2.73	\$30.73	\$11.20	\$1.09	\$12.29
300D050000	Lip Injection Pumping Clicks - Sweet Lavendar	130	\$28.00	\$2.73	\$30.73	\$11.20	\$1.09	\$12.29
300D060000	Lip Injection Pumping Clicks - Voted Most Popular	130	\$28.00	\$2.73	\$30.73	\$11.20	\$1.09	\$12.29
300D070000	Lip Injection Pumping Clicks - Kiss the Bride	130	\$28.00	\$2.73	\$30.73	\$11.20	\$1.09	\$12.29
300D080000	Lip Injection Pumping Clicks - Feelin' Spicy	130	\$28.00	\$2.73	\$30.73	\$11.20	\$1.09	\$12.29
300D090000	Lip Injection Pumping Clicks - On Point	130	\$28.00	\$2.73	\$30.73	\$11.20	\$1.09	\$12.29
3CFW110000	Lip Injection Power Pumping Lip Gloss Wifey for Lifey	100	\$28.00	\$2.73	\$30.73	\$11.20	\$1.09	\$12.29
3CFW010000	Lip Injection Power Pumping Lip Gloss Stars Are Aligned	100	\$28.00	\$2.73	\$30.73	\$11.20	\$1.09	\$12.29
3CFW060000	Lip Injection Power Pumping Lip Gloss Soulmate	100	\$28.00	\$2.73	\$30.73	\$11.20	\$1.09	\$12.29
3CFW050000	Lip Injection Power Pumping Lip Gloss Glossy & Bossy	100	\$28.00	\$2.73	\$30.73	\$11.20	\$1.09	\$12.29
3CFW120000	Lip Injection Power Pumping Lip Gloss Just A Girl	100	\$28.00	\$2.73	\$30.73	\$11.20	\$1.09	\$12.29
3CFW150000	Lip Injection Power Pumping Lip Gloss Paid Off	100	\$28.00	\$2.73	\$30.73	\$11.20	\$1.09	\$12.29
3R27010000	Lip Injection Extreme Lip Shaper Post Op Pink	170	\$24.00	\$2.34	\$26.34	\$9.60	\$0.94	\$10.54
3R27020000	Lip Injection Extreme Lip Shaper Puffy Nude	170	\$24.00	\$2.34	\$26.34	\$9.60	\$0.94	\$10.54
3R27050000	Lip Injection Extreme Lip Shaper Hot & Spicy	170	\$24.00	\$2.34	\$26.34	\$9.60	\$0.94	\$10.54
3R27060000	Lip Injection Extreme Lip Shaper Cinnamon Swell	170	\$24.00	\$2.34	\$26.34	\$9.60	\$0.94	\$10.54
3R27070000	Lip Injection Extreme Lip Shaper In Big Truffle	170	\$24.00	\$2.34	\$26.34	\$9.60	\$0.94	\$10.54
3R27080000	Lip Injection Extreme Lip Shaper Espresso Shot	170	\$24.00	\$2.34	\$26.34	\$9.60	\$0.94	\$10.54
30CB020000	Lip Injection Extreme Lip Shaper - Happily Ever After	170	\$24.00	\$2.34	\$26.34	\$9.60	\$0.94	\$10.54
30CB050000	Lip Injection Extreme Lip Shaper - I Do	170	\$24.00	\$2.34	\$26.34	\$9.60	\$0.94	\$10.54
30CB010000	Lip Injection Extreme Lip Shaper - Voted Most Popular	170	\$24.00	\$2.34	\$26.34	\$9.60	\$0.94	\$10.54
3CPX010000	Lip Injection Maximum Plump - Original	312	\$33.00	\$3.22	\$36.22	\$13.20	\$1.29	\$14.49
3PWN010000	Lip Injection Maximum Plump - Yummy Bear	360	\$33.00	\$3.22	\$36.22	\$13.20	\$1.29	\$14.49
3PWT010000	Lip Injection Maximum Plump - Blueberry Buzz	360	\$33.00	\$3.22	\$36.22	\$13.20	\$1.29	\$14.49
3PWR010000	Lip Injection Maximum Plump -Cotton Candy Kisses	360	\$33.00	\$3.22	\$36.22	\$13.20	\$1.29	\$14.49
3PWP010000	Lip Injection Maximum Plump - Creamsicle Dream	360	\$33.00	\$3.22	\$36.22	\$13.20	\$1.29	\$14.49
39G8010000	Lip Injection Extreme Original Clear	312	\$29.00	\$2.83	\$31.83	\$11.60	\$1.13	\$12.73
3C7H020000	Lip Injection Extreme Strawberry Kiss	312	\$29.00	\$2.83	\$31.83	\$11.60	\$1.13	\$12.73
3C7H050000	Lip Injection Extreme Tangerine Dream	312	\$29.00	\$2.83	\$31.83	\$11.60	\$1.13	\$12.73
3C7H060000	Lip Injection Extreme Pink Punch	312	\$29.00	\$2.83	\$31.83	\$11.60	\$1.13	\$12.73
3C7H010000	Lip Injection Extreme Bubblegum Yum	312	\$29.00	\$2.83	\$31.83	\$11.60	\$1.13	\$12.73
30B8010000	Pillow Balm Revamp - Original	132	\$26.00	\$2.54	\$28.54	\$10.40	\$1.01	\$11.41
30B9040000	Pillow Balm Revamp - Pink Pineapple Kiss	132	\$26.00	\$2.54	\$28.54	\$10.40	\$1.01	\$11.41
30BC010000	Pillow Balm Revamp - Berry Jam Kiss	132	\$26.00	\$2.54	\$28.54	\$10.40	\$1.01	\$11.41
30BD010000	Pillow Balm Revamp - Banana Kiss	132	\$26.00	\$2.54	\$28.54	\$10.40	\$1.01	\$11.41
30BE010000	Pillow Balm Revamp - Hot Cocoa Kiss	132	\$26.00	\$2.54	\$28.54	\$10.40	\$1.01	\$11.41