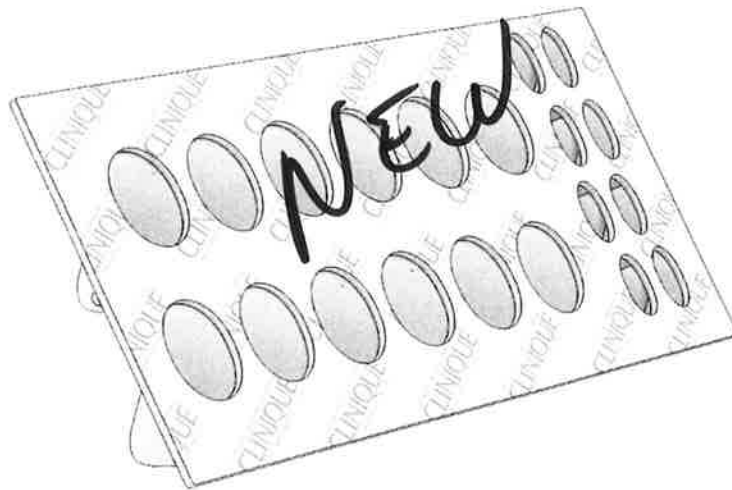


**CLINIQUE**

~~Specific italy EBV topper~~ **CL locator topper**

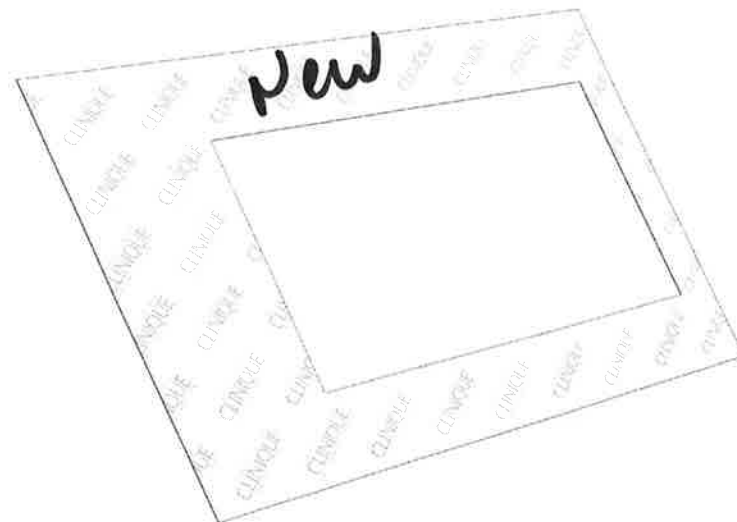
Components for update.  
Kit consists of:

Locator



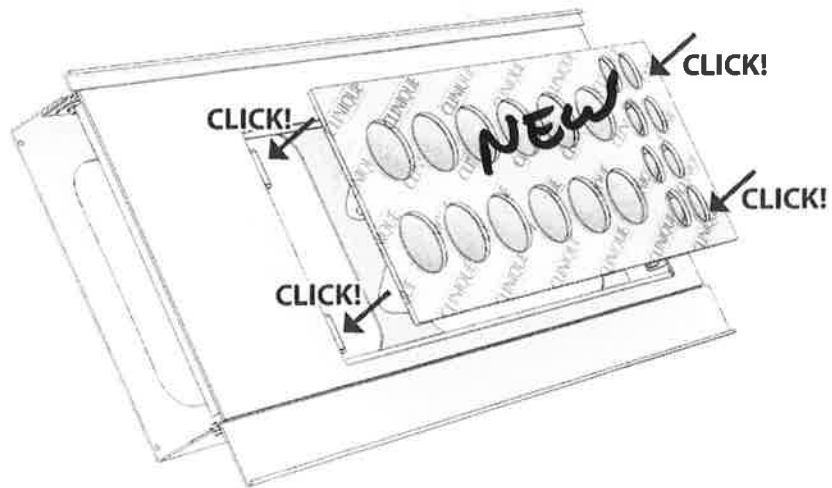
x1

Frame visual

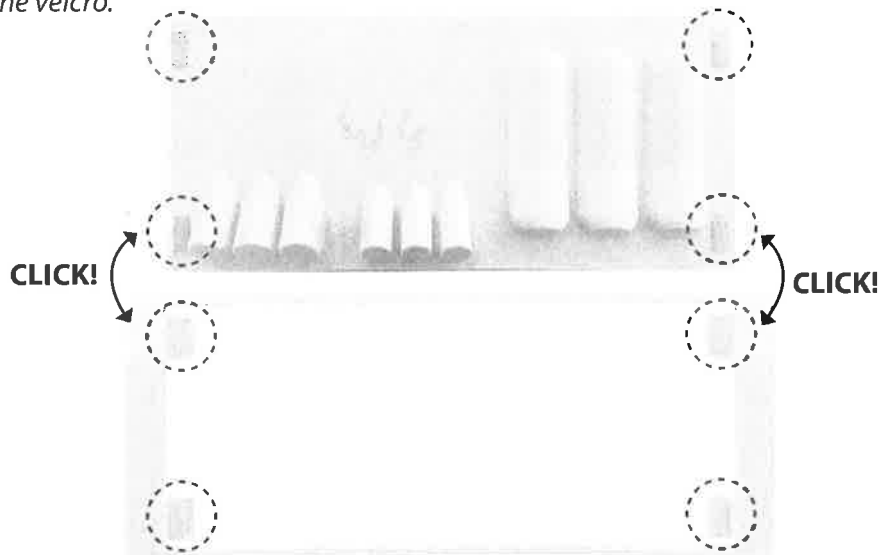


x1

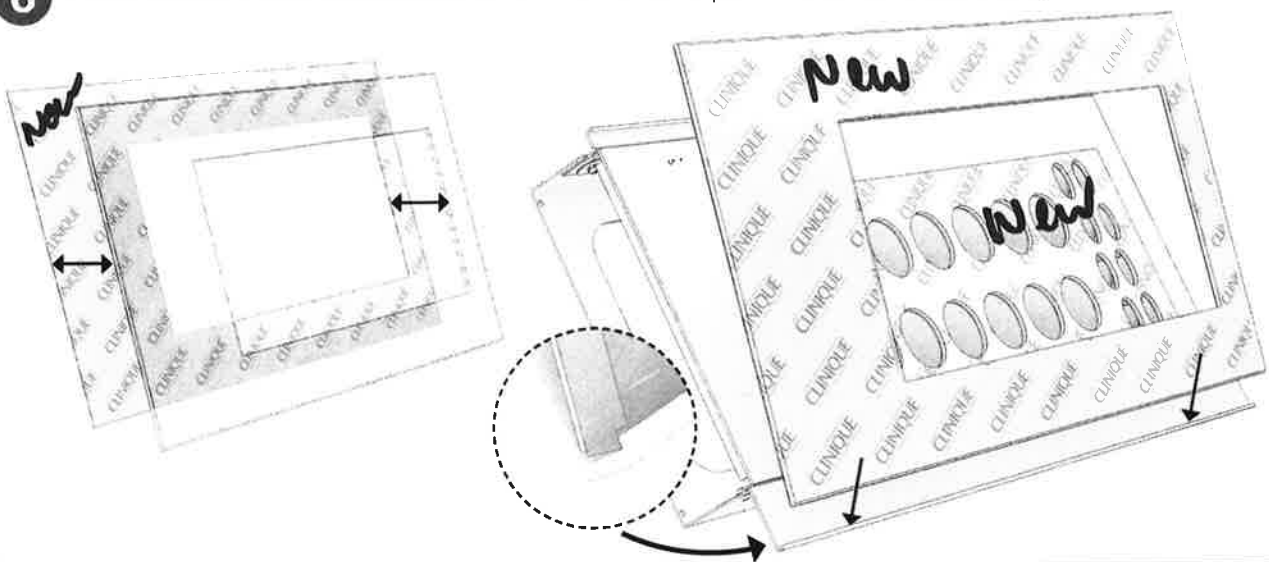
**4** Install the new insert on metal retrofit, by pressing on the 4 corners (velcro tapes).



**5** Location of the velcro.



**6** Place the rolled New visual under the clear frame and place them on the structure.

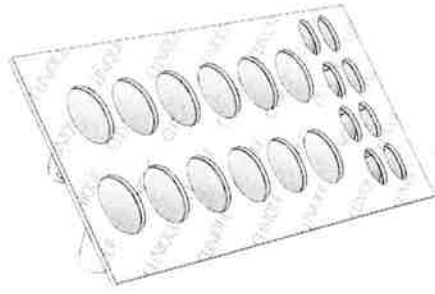


## Disposal instruction

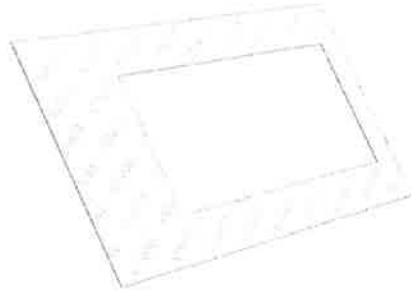
### NOMENCLATURE

<i>Generic module</i>
PMMA
PS
Paper

Locator  
(PMMA + HIPS)



Frame visual

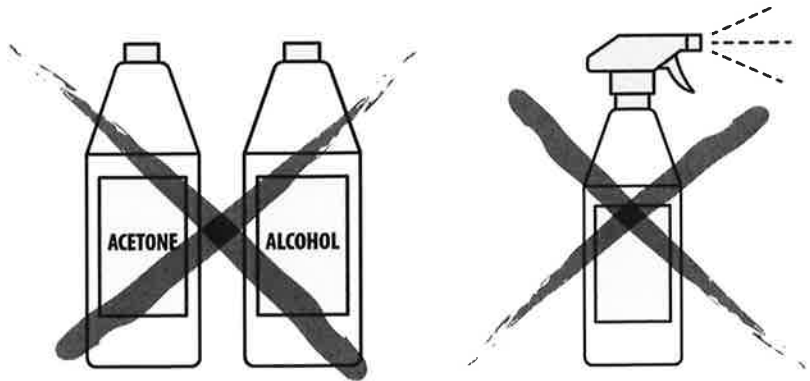


## Cleaning your unit

It is essential that the unit is regularly cleaned.

### DO NOT USE:

- Cleaning spray!
- Window cleaner!
- Household cleaner!
- Aerosol spray!
- Solvent!
- Alcohol!
- Ammonia!
- Acetone!
- Abrasive!



### SAFE TO USE:

- Microfiber cloth
- Soapy solution (dishwashing liquid diluted in water) lightly applied to cloth

