



# full spectrum demi-permanent™

vegan treatment hair color  
hair color chart

AVEDA



# Full spectrum demi-permanent™ vegan treatment hair color



## Components

- Natural:** Nine **natural series** levels range from 1–10, excluding 2.
- Natural sheer:** Five **natural sheer series** levels range from 5–9, for more translucent, slightly cooler, natural results.
- Universal ØN Gel:** A virtually colorless base that enhances hair with incredible condition and shine.
- Tones:** 13 **tones** formulated to be used alone or mixed with **natural series** or **natural sheer series** shades to create an infinite palette of colors.

Light Tones (Levels 7–10)	Dark Tones (Levels 3–6)
Grey (Gr)	Green (G)
Light Intense Ash (B)	Dark Intense Ash (Gr/G)
Light Ash (V/Gr)	Dark Ash (B)
Pink (P)	Dark Gold (Y/O)
Light Gold (Y/O)	Dark Copper (O/R)
Light Copper (O)	Red (R)
	Violet (V)

**Toners:** Seven pre-customized **toners** formulated for lightened blondes.

Yellow (Y)
Violet Red/Yellow (VR/Y)
Violet/Yellow (V/Y)
Violet (V)
Violet/Blue (V/B)
Blue/Violet (B/V)
Blue/Blue Violet (B/BV)

**Color catalyst™ conditioning creme developer and liquid developer:** Customize tonality, intensity and coverage by choosing **5** or **10 volume color catalyst™** and a 5–20-minute processing time. Available in liquid and creme forms, providing versatile, bottle or brush application options.



Natural remaining pigment (NRP)

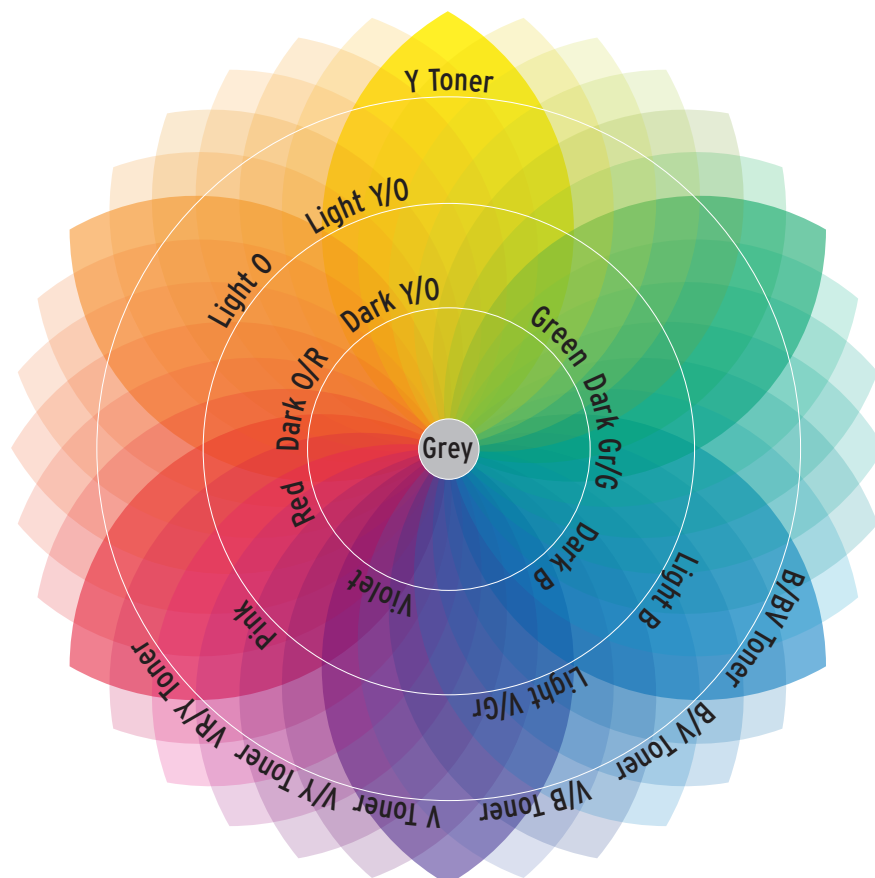
NRP is the tonal value that the hair contributes as it lightens. It is important to determine the NRP the hair will contribute at the desired level prior to applying hair color. After you identify the NRP at the desired level, determine whether you want to neutralize or enhance the NRP, and choose the appropriate tone accordingly using the color wheel.

TONAL RESULT GUIDELINES	
TO NEUTRALIZE	Choose tones that are complementary to the NRP at the target level.
TO ENHANCE	Choose tones that are the same as the NRP at the target level.

Toners are calibrated to neutralize or enhance the corresponding natural remaining pigment (NRP) after lightening hair. Refer to the following chart to neutralize or enhance lifted NRP.

TONER	NATURAL REMAINING PIGMENT			
Yellow (Y)				
Violet Red/Yellow (VR/Y)				
Violet/Yellow (V/Y)				
Violet (V)				
Violet/Blue (V/B)				
Blue/Violet (B/V)				
Blue/Blue Violet (B/BV)				

LEVEL	DESCRIPTOR	NATURAL REMAINING PIGMENT	COMPLEMENTARY PIGMENT
10	Lightest Blonde	Pale Yellow	Violet
9	Very Light Blonde	Yellow	
8	Light Blonde	Yellow/Orange	Blue/Violet
7	Medium Blonde	Orange	Blue
6	Dark Blonde	Red/Orange	Blue/Green
5	Lightest Brown	Red	Green
4	Light Brown		
3	Medium Brown		
2	Dark Brown		
1	Black		





# Full spectrum demi-permanent™ customization chart

LEVEL	TONE	NATURAL	NATURAL SHEER	GREEN	INTENSE ASH		ASH	GREY	PINK	GOLD	COPPER	RED	VIOLET					
TONERS			VIOLET/YELLOW		BLUE/ BLUE VIOLET	BLUE/VIOLET	VIOLET/BLUE	VIOLET			YELLOW		VIOLET RED/YELLOW					
Ø	UNIVERSAL ØN	UNIVERSAL ØN can be used to customize all <b>bases</b> and <b>tones</b>																
LIGHT	10			Not recommended for customization								Not recommended for customization						
		10N			40 g <b>10N</b> 4 g Light B	40 g <b>10N</b> 4 g Light V/Gr	40 g <b>10N</b> 4 g Gr	40 g <b>10N</b> 4 g P	40 g <b>10N</b> 4 g Light Y/O	40 g <b>10N</b> 4 g Light O								
	9																	
		9N	9NS		40 g <b>9N</b> 8 g Light B	40 g <b>9N</b> 8 g Light V/Gr	40 g <b>9N</b> 8 g Gr	40 g <b>9N</b> 8 g P	40 g <b>9N</b> 8 g Light Y/O	40 g <b>9N</b> 8 g Light O								
	8																	
		8N	8NS		40 g <b>8N</b> 12 g Light B	40 g <b>8N</b> 12 g Light V/Gr	40 g <b>8N</b> 12 g Gr	40 g <b>8N</b> 12 g P	40 g <b>8N</b> 12 g Light Y/O	40 g <b>8N</b> 12 g Light O								
	7																	
		7N	7NS	40 g <b>7N</b> 16 g G	40 g <b>7N</b> 16 g Light B	40 g <b>7N</b> 16 g Light V/Gr	40 g <b>7N</b> 16 g Gr	40 g <b>7N</b> 16 g P	40 g <b>7N</b> 16 g Light Y/O	40 g <b>7N</b> 16 g Light O								
LIGHT TONES					LIGHT BLUE	LIGHT VIOLET/GREY	GREY	PINK	LIGHT YELLOW/ORANGE	LIGHT ORANGE								
DARK	6																	
		6N	6NS	40 g <b>6N</b> 4 g G	40 g <b>6N</b> 4 g Dark Gr/G	40 g <b>6N</b> 4 g Dark B	40 g <b>6N</b> 4 g Gr	40 g <b>6N</b> 4 g P	40 g <b>6N</b> 4 g Dark Y/O	40 g <b>6N</b> 4 g Dark O/R	40 g <b>6N</b> 4 g R	40 g <b>6N</b> 4 g V						
	5																	
		5N	5NS	40 g <b>5N</b> 8 g G	40 g <b>5N</b> 8 g Dark Gr/G	40 g <b>5N</b> 8 g Dark B	40 g <b>5N</b> 8 g Gr	40 g <b>5N</b> 8 g P	40 g <b>5N</b> 8 g Dark Y/O	40 g <b>5N</b> 8 g Dark O/R	40 g <b>5N</b> 8 g R	40 g <b>5N</b> 8 g V						
	4						Not recommended for customization											
		4N		40 g <b>4N</b> 12 g G	40 g <b>4N</b> 12 g Dark Gr/G	40 g <b>4N</b> 12 g Dark B					40 g <b>4N</b> 12 g Dark Y/O	40 g <b>4N</b> 12 g Dark O/R	40 g <b>4N</b> 12 g R	40 g <b>4N</b> 12 g V				
	3																	
		3N		40 g <b>3N</b> 16 g G	40 g <b>3N</b> 16 g Dark Gr/G	40 g <b>3N</b> 16 g Dark B					40 g <b>3N</b> 16 g Dark Y/O	40 g <b>3N</b> 16 g Dark O/R	40 g <b>3N</b> 16 g R	40 g <b>3N</b> 16 g V				
	1			Not recommended for customization							Not recommended for customization							
		1N																
DARK TONES				GREEN	DARK GREY/GREEN	DARK BLUE				DARK YELLOW/ORANGE	DARK ORANGE/RED	RED	VIOLET					



# Mixing guidelines

Mix the chosen **full spectrum demi-permanent™ vegan treatment hair color** components with **color catalyst™ conditioning creme developer** or **liquid developer** in a 1:1 or 1:1.5 ratio. Process at room temperature. Do not use heat.

## Color catalyst™ selection guidelines

### 5 VOLUME

- Creates more translucent results
- Use on compromised or extremely porous hair



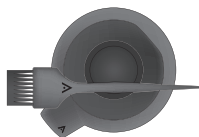
### 10 VOLUME

- Creates more saturated results
- Ideal for color glossing or grey coverage



### Creme

- Suitable for color glossing, color balancing or grey coverage
- Ideal for bowl and brush applications



### Liquid

- Suitable for quick applications (e.g., glossing or toning at the shampoo bowl)
- Ideal for bottle applications



**Recommended mixing ratio:** 1:1 or 1:1.5

**Processing time:** 5–20 minutes at room temperature

## Glossing guidelines

FORMULA TYPE	NATURAL SERIES OR NATURAL SHEER SERIES	STONE	COLOR CATALYST™ 1:1 RATIO¹
NATURAL	40 g	—	40 ml
NATURAL TONAL	40 g	4–16 g	40 ml
NATURAL PLUS	30 g	10 g	40 ml
NATURAL BRIGHT	20 g	20 g	40 ml
NATURAL INTENSE	10 g	30 g	40 ml
PURE TONAL	—	40 g	40 ml

## Toning guidelines

TONER²	COLOR CATALYST™ 1:1.5 RATIO	PROCESSING TIME (ROOM TEMPERATURE)
40 g	60 ml	5–20 minutes

## Color balancing guidelines

FORMULA TYPE		NATURAL SERIES	NATURAL SHEER SERIES	UNIVERSAL ØN GEL	STONE	COLOR CATALYST™ 1:1 RATIO¹	PROCESSING TIME (ROOM TEMPERATURE)
TONAL REFRESH: Lost tone		—	—	40 g	4–16 g	40 ml	10–20 minutes
LEVEL AND TONE REFRESH: Lost 1–2 levels	Desired level: 1–4	20 g	—	20 g	0–16 g	40 ml	10–20 minutes
	Desired level: 5–9	—	40 g	—	0–16 g	40 ml	10–20 minutes
RE-ESTABLISH: Lost three or more levels		Refer to Precoloration Guidelines.					

¹Formulas may also be mixed with **color catalyst™** in a 1:1.5 ratio.

²Toners may be mixed with any **full spectrum demi-permanent™** component, including **natural series**, **natural sheer series** and **tones**.

³Formulas may be mixed with **color catalyst™** in a 1:1 or 1:1.5 ratio.



## Grey coverage guidelines

COVERAGE TYPE	NATURAL SERIES	NATURAL SHEER SERIES	tone	10 VOLUME COLOR CATALYST™ 1:1 RATIO	PROCESSING TIME (ROOM TEMPERATURE)
SHEER (levels 5–9)	—	40 g	0–16 g	40 ml	10 minutes
BLEND	40 g	—	0–16 g	40 ml	10 minutes
COVER	40 g	—	0–16 g	40 ml	20 minutes

## Precoloration guidelines

1	Identify the level of the previously colored hair.
2	Determine the desired level and tone.
3	Choose the precoloration shade based on the desired result and level.
4	Spray the hair evenly with <b>botanical repair™ professional equalizing primer</b> .
5	Mix the precoloration formula with <b>10 volume color catalyst™ conditioning developer</b> in 1:1 ratio, and apply.
6	Process for 10–20 minutes at room temperature. Do not use heat.
7	Shampoo and condition.
8	Recolor the hair with the desired <b>full spectrum permanent™</b> or <b>full spectrum demi-permanent™</b> hair color formula.

## Shine refresh treatment guidelines

SHINE REFRESH TREATMENT		
UNIVERSAL ØN GEL	5 VOLUME COLOR CATALYST™—LIQUID <sup>3</sup>	PROCESSING TIME (ROOM TEMPERATURE)
40 g	40 ml	5 minutes

SHINE AND TONE REFRESH TREATMENT			
UNIVERSAL ØN GEL	TONE	5 VOLUME COLOR CATALYST™—LIQUID <sup>3</sup>	PROCESSING TIME (ROOM TEMPERATURE)
20 g	20 g	40 ml	10—20 minutes

## Bond-building and strengthening color treatment guidelines

Aveda recommends performing a professional **bond-building and strengthening color treatment** with every hair color service (except **full spectrum vibrants™**).

1	Spray the hair with up to 5 ml (30 sprays) of <b>botanical repair™ professional equalizing primer</b> , and comb through to distribute.
2	Mix <b>botanical repair™ professional hair strengthening additive</b> into the hair color formula. Use 8 g for every 40 g of hair color or 30 g (1 scoop) of <b>enlightener™ powder lightener</b> or <b>high-lift lightener</b> .
3	Perform the scheduled hair color service.
4	Process, rinse and shampoo with <b>botanical repair™ strengthening shampoo</b> .
5	Apply 20 g <b>botanical repair™ professional bond activator</b> to the hair, process for 10 minutes and rinse.

			
PRIMER	ADDITIVE	HAIR COLOR/ ENLIGHTENER™	ACTIVATOR: LIGHT OR RICH
up to 5 ml (30 sprays)	8 g	40 g/30 g (1 scoop)	20 g

## Removal guidelines

1	Rinse the hair thoroughly with comfortably warm water until the water runs clear.
2	Shampoo with <b>botanical repair™ strengthening shampoo</b> , rinse thoroughly and squeeze excess moisture from the hair.
3	Condition with <b>botanical repair™ strengthening conditioner</b> , and rinse.



Our mission at Aveda is to care for the world we live in, from the products we make to the ways in which we give back to society. At Aveda, we strive to set an example for environmental leadership and responsibility, not just in the world of beauty, but around the world.

### **Questions?**

Call the Aveda Technical Hotline at 1.888.HAIR.SØS (424.7707) USA.